

ARSF Rabbit Polyclonal Antibody



CAB8102

Product Information

Size:

20uL, 50uL, 100uL, 200uL

Observed MW:

66kDa

Calculated MW:

65kDa

Applications:

WB IHC

Reactivity:

Human, Mouse, Rat

Protein Background

This gene is a member of the sulfatase family, and more specifically, the arylsulfatase subfamily. Members of the subfamily share similarity in sequence and splice sites, and are clustered together on chromosome X, suggesting that they are derived from recent gene duplication events. Sulfatases are essential for the correct composition of bone and cartilage matrix. The activity of this protein, unlike that of arylsulfatase E, is not inhibited by warfarin. Multiple alternatively spliced variants, encoding the same protein, have been identified.

Immunogen information

Gene ID:

416

Uniprot

P54793

Synonyms:

ARSF; ASF

Antibody Information

Recommended dilutions:

WB 1:500 - 1:2000 IHC 1:50
- 1:100

Source:

Rabbit

Isotype:

IgG

Purification:

Affinity purification

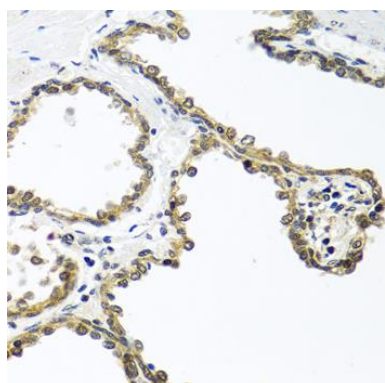
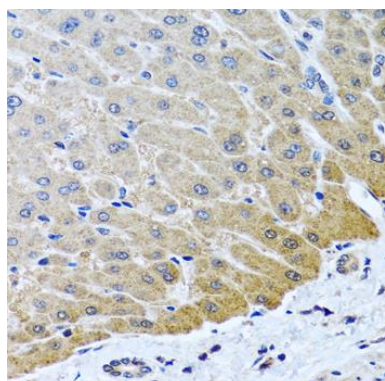
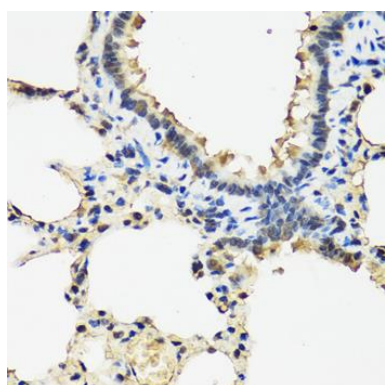
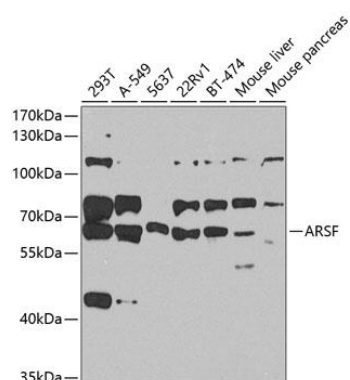
Immunogen:

Recombinant fusion protein containing a sequence corresponding to amino acids 1-200 of human ARSF (NP_004033.2).

Storage:

Store at -20°C. Avoid freeze / thaw cycles. Buffer: PBS with 0.02% sodium azide, 50% glycerol, pH7.3.

Product Images



Western blot analysis of extracts of various cell lines, using ARSF antibody (CAB8102) at 1:1000 dilution. Secondary antibody: HRP Goat Anti-Rabbit IgG (H+L) (CABS014) at 1:10000 dilution. Lysates/proteins: 25ug per lane. Blocking buffer: 3% nonfat dry milk in TBST. Detection: ECL Basic Kit (CABM00020). Exposure time: 90s.

Immunohistochemistry of paraffin-embedded rat lung using ARSF antibody (CAB8102) at dilution of 1:100 (40x lens).

Immunohistochemistry of paraffin-embedded human liver using ARSF antibody (CAB8102) at dilution of 1:100 (40x lens).

Immunohistochemistry of paraffin-embedded human prostate using ARSF antibody (CAB8102) at dilution of 1:100 (40x lens).