

ENTPD5 Rabbit Polyclonal Antibody



CAB8108

Product Information

Size:

20uL, 50uL, 100uL, 200uL

Observed MW:

Calculated MW:

47kDa

Applications:

IF

Reactivity:

Human

Antibody Information

Recommended dilutions:

IF 1:50 - 1:200

Source:

Rabbit

Isotype:

IgG

Purification:

Affinity purification

Protein Background

The protein encoded by this gene is similar to E-type nucleotidases (NTPases)/ecto-ATPase/apyrases. NTPases, such as CD39, mediate catabolism of extracellular nucleotides. ENTPD5 contains 4 apyrase-conserved regions which is characteristic of NTPases.

Immunogen information

Gene ID:

957

Uniprot

O75356

Synonyms:

ENTPD5; CD39L4; NTPDase-5; PCPH

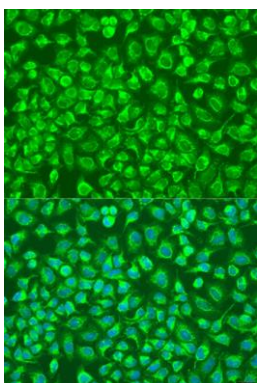
Immunogen:

Recombinant fusion protein containing a sequence corresponding to amino acids 149-428 of human ENTPD5 (NP_001240.1).

Storage:

Store at -20°C. Avoid freeze / thaw cycles. Buffer: PBS with 0.02% sodium azide, 50% glycerol, pH7.3.

Product Images



Immunofluorescence analysis of U2OS cells using ENTPD5 antibody (CAB8108) at dilution of 1:100. Blue: DAPI for nuclear staining.