

CEACAM7 Rabbit Polyclonal Antibody



CAB8112

Product Information

Size:

20uL, 50uL, 100uL, 200uL

Observed MW:

29kDa

Calculated MW:

19kDa/29kDa

Applications:

WB IHC

Reactivity:

Human, Mouse, Rat

Protein Background

This gene encodes a cell surface glycoprotein and member of the carcinoembryonic antigen (CEA) family of proteins. Expression of this gene may be downregulated in colon and rectal cancer. Additionally, lower expression levels of this gene may be predictive of rectal cancer recurrence. This gene is present in a CEA family gene cluster on chromosome 19. Alternative splicing results in multiple transcript variants.

Immunogen information

Gene ID:

1087

Uniprot

Q14002

Synonyms:

CEACAM7; CGM2

Antibody Information

Recommended dilutions:

WB 1:500 - 1:2000 IHC 1:50
- 1:100

Source:

Rabbit

Isotype:

IgG

Purification:

Affinity purification

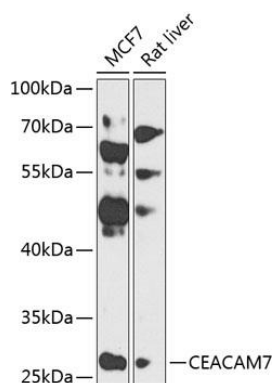
Immunogen:

Recombinant fusion protein containing a sequence corresponding to amino acids 36-242 of human CEACAM7 (NP_008821.2).

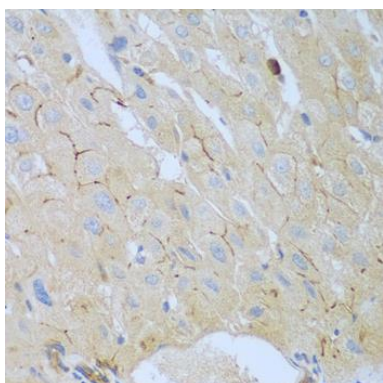
Storage:

Store at -20°C. Avoid freeze / thaw cycles. Buffer: PBS with 0.02% sodium azide, 50% glycerol, pH7.3.

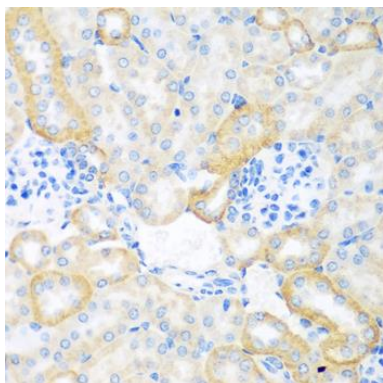
Product Images



Western blot analysis of extracts of various cell lines, using CEACAM7 antibody (CAB8112) at 1:1000 dilution. Secondary antibody: HRP Goat Anti-Rabbit IgG (H+L) (CABS014) at 1:10000 dilution. Lysates/proteins: 25ug per lane. Blocking buffer: 3% nonfat dry milk in TBST. Detection: ECL Basic Kit (CABM00020). Exposure time: 90s.



Immunohistochemistry of paraffin-embedded human liver cancer using CEACAM7 antibody (CAB8112) at dilution of 1:100 (40x lens).



Immunohistochemistry of paraffin-embedded mouse kidney using CEACAM7 antibody (CAB8112) at dilution of 1:100 (40x lens).