

# ERCC4 Rabbit Polyclonal Antibody



CAB8119

## Product Information

### Size:

20uL, 50uL, 100uL, 200uL

### Observed MW:

120kDa

### Calculated MW:

42kDa/104kDa

### Applications:

WB IP

### Reactivity:

Human, Mouse, Rat

## Protein Background

The protein encoded by this gene forms a complex with ERCC1 and is involved in the 5' incision made during nucleotide excision repair. This complex is a structure specific DNA repair endonuclease that interacts with EME1. Defects in this gene are a cause of xeroderma pigmentosum complementation group F (XP-F), or xeroderma pigmentosum VI (XP6).

## Immunogen information

### Gene ID:

2072

### Uniprot

Q92889

### Synonyms:

ERCC4; ERCC11; FANCO; RAD1; XFEPS; XPF

## Antibody Information

### Recommended dilutions:

WB 1:500 - 1:2000 IP 1:20 - 1:50

### Source:

Rabbit

### Isotype:

IgG

### Purification:

Affinity purification

### Immunogen:

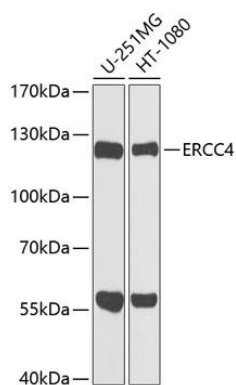
A synthetic peptide corresponding to a sequence within amino acids 600-700 of human ERCC4 (NP\_005227.1).

### Storage:

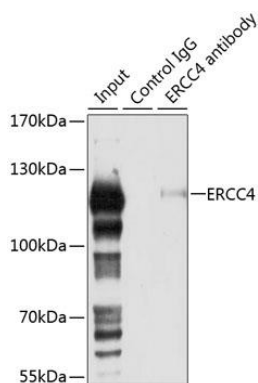
Store at -20°C. Avoid freeze / thaw cycles. Buffer: PBS with 0.02% sodium azide, 50% glycerol, pH7.3.

## Product Images

---



Western blot analysis of extracts of various cell lines, using ERCC4 antibody (CAB8119) at 1:1000 dilution. Secondary antibody: HRP Goat Anti-Rabbit IgG (H+L) (CABS014) at 1:10000 dilution. Lysates/proteins: 25ug per lane. Blocking buffer: 3% nonfat dry milk in TBST. Detection: ECL Basic Kit (CABM00020). Exposure time: 30s.



Immunoprecipitation analysis of 150ug extracts of 293T cells using 3ug ERCC4 antibody (CAB8119). Western blot was performed from the immunoprecipitate using ERCC4 antibody (CAB8119) at a dilution of 1:1000.