

IFNW1 Rabbit Polyclonal Antibody



CAB8125

Product Information

Size:

20uL, 50uL, 100uL, 200uL

Observed MW:

27kDa

Calculated MW:

22kDa

Applications:

WB IHC

Reactivity:

Mouse, Rat

Protein Background

The protein encoded by this gene is an interferon and possesses antiviral activity. The encoded protein binds to the interferon alpha/beta receptor but not to the interferon gamma receptor. This intronless gene has several pseudogenes spread throughout the genome.

Immunogen information

Gene ID:

3467

Uniprot

P05000

Synonyms:

IFNW1

Antibody Information

Recommended dilutions:

WB 1:500 - 1:2000 IHC 1:50
- 1:100

Source:

Rabbit

Isotype:

IgG

Purification:

Affinity purification

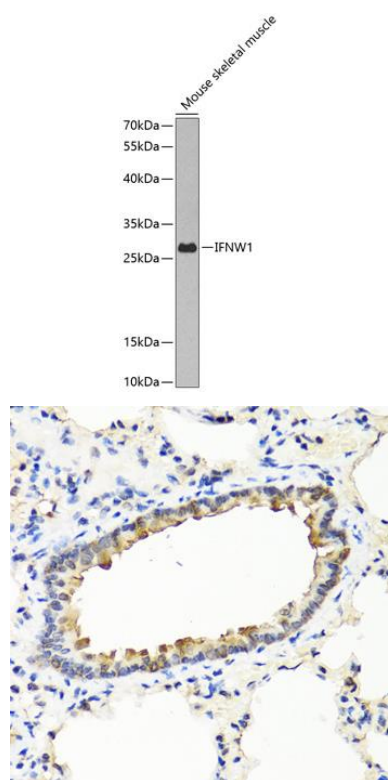
Immunogen:

Recombinant fusion protein containing a sequence corresponding to amino acids 22-195 of human IFNW1 (NP_002168.1).

Storage:

Store at -20°C. Avoid freeze / thaw cycles. Buffer: PBS with 0.02% sodium azide, 50% glycerol, pH7.3.

Product Images



Western blot analysis of extracts of mouse skeletal muscle, using IFNW1 antibody (CAB8125) at 1:1000 dilution. Secondary antibody: HRP Goat Anti-Rabbit IgG (H+L) (CABS014) at 1:10000 dilution. Lysates/proteins: 25ug per lane. Blocking buffer: 3% nonfat dry milk in TBST. Detection: ECL Basic Kit (CABM00020). Exposure time: 90s.

Immunohistochemistry of paraffin-embedded rat lung using IFNW1 antibody (CAB8125) at dilution of 1:100 (40x lens).