

NDUFA2 Rabbit Polyclonal Antibody



CAB8136

Product Information

Size:

20uL, 50uL, 100uL, 200uL

Observed MW:

11kDa

Calculated MW:

8kDa/10kDa

Applications:

WB IHC IF

Reactivity:

Human, Mouse, Rat

Protein Background

The encoded protein is a subunit of the hydrophobic protein fraction of the NADH:ubiquinone oxidoreductase (complex 1), the first enzyme complex in the electron transport chain located in the inner mitochondrial membrane, and may be involved in regulating complex I activity or its assembly via assistance in redox processes. Mutations in this gene are associated with Leigh syndrome, an early-onset progressive neurodegenerative disorder. Alternative splicing results in multiple transcript variants.

Immunogen information

Gene ID:

4695

Uniprot

O43678

Synonyms:

NDUFA2; B8; CD14; CIB8

Antibody Information

Recommended dilutions:

WB 1:500 - 1:2000 IHC 1:50
- 1:100 IF 1:50 - 1:200

Source:

Rabbit

Isotype:

IgG

Purification:

Affinity purification

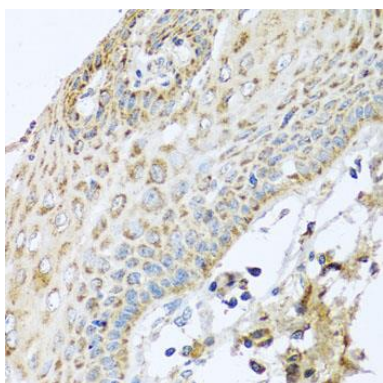
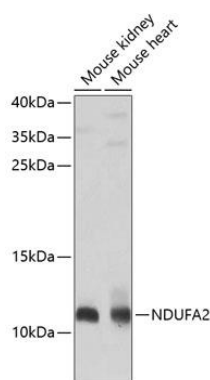
Immunogen:

Recombinant fusion protein containing a sequence corresponding to amino acids 1-95 of human NDUFA2 (NP_002479.1).

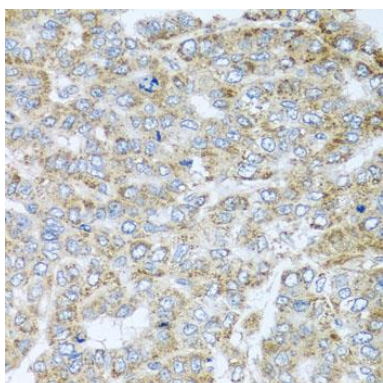
Storage:

Store at -20°C. Avoid freeze / thaw cycles. Buffer: PBS with 0.02% sodium azide, 50% glycerol, pH7.3.

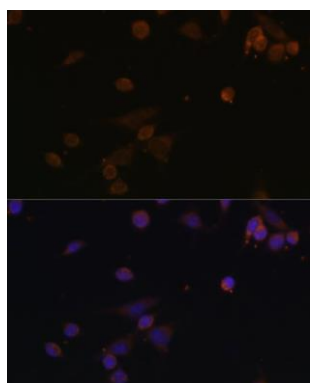
Product Images



Immunohistochemistry of paraffin-embedded human esophagus using NDUFA2 antibody (CAB8136) at dilution of 1:100 (40x lens).



Immunohistochemistry of paraffin-embedded human liver cancer using NDUFA2 antibody (CAB8136) at dilution of 1:100 (40x lens).



Immunofluorescence analysis of NIH/3T3 cells using NDUFA2 antibody (CAB8136) at dilution of 1:100. Blue: DAPI for nuclear staining.