

UCHL3 Rabbit Polyclonal Antibody



CAB8156

Product Information

Size:

20uL, 50uL, 100uL, 200uL

Observed MW:

26kDa

Calculated MW:

26kDa

Applications:

WB IHC

Reactivity:

Human, Mouse, Rat

Protein Background

The protein encoded by this gene is a member of the deubiquitinating enzyme family. Members of this family are proteases that catalyze the removal of ubiquitin from polypeptides and are divided into five classes, depending on the mechanism of catalysis. This protein may hydrolyze the ubiquitinyl-N-epsilon amide bond of ubiquitinated proteins to regenerate ubiquitin for another catalytic cycle. Alternative splicing results in multiple transcript variants that encode different protein isoforms.

Immunogen information

Gene ID:

7347

Uniprot

P15374

Synonyms:

UCHL3; UCH-L3

Antibody Information

Recommended dilutions:

WB 1:500 - 1:2000 IHC 1:50
- 1:100

Source:

Rabbit

Isotype:

IgG

Purification:

Affinity purification

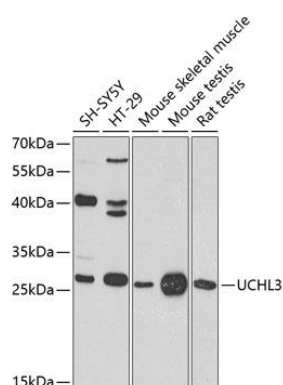
Immunogen:

Recombinant fusion protein containing a sequence corresponding to amino acids 1-220 of human UCHL3 (NP_005993.1).

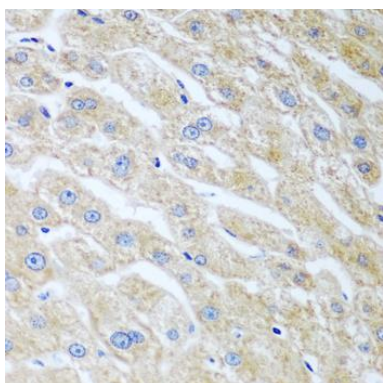
Storage:

Store at -20°C. Avoid freeze / thaw cycles. Buffer: PBS with 0.02% sodium azide, 50% glycerol, pH7.3.

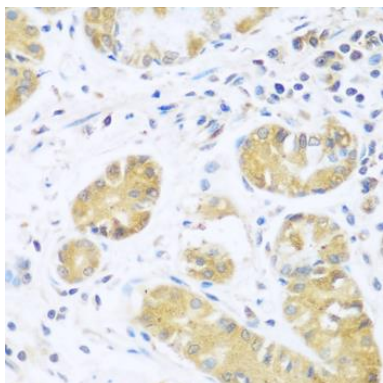
Product Images



Western blot analysis of extracts of various cell lines, using UCHL3 antibody (CAB8156) at 1:1000 dilution. Secondary antibody: HRP Goat Anti-Rabbit IgG (H+L) (CABS014) at 1:10000 dilution. Lysates/proteins: 25ug per lane. Blocking buffer: 3% nonfat dry milk in TBST. Detection: ECL Basic Kit (CABM00020). Exposure time: 90s.



Immunohistochemistry of paraffin-embedded human liver using UCHL3 antibody (CAB8156) at dilution of 1:100 (40x lens).



Immunohistochemistry of paraffin-embedded human stomach using UCHL3 antibody (CAB8156) at dilution of 1:100 (40x lens).