

SLC12A6 Rabbit Polyclonal Antibody



CAB8180

Product Information

Size:

20uL, 50uL, 100uL, 200uL

Observed MW:

Calculated MW:

120kDa/121kDa/122kDa/125kDa/126kDa/127kDa

Applications:

IF

Reactivity:

Human

Antibody Information

Recommended dilutions:

IF 1:50 - 1:200

Source:

Rabbit

Isotype:

IgG

Purification:

Affinity purification

Protein Background

This gene is a member of the K-Cl cotransporter (KCC) family. K-Cl cotransporters are integral membrane proteins that lower intracellular chloride concentrations below the electrochemical equilibrium potential. The proteins encoded by this gene are activated by cell swelling induced by hypotonic conditions. Alternate splicing results in multiple transcript variants encoding different isoforms. Mutations in this gene are associated with agenesis of the corpus callosum with peripheral neuropathy.

Immunogen information

Gene ID:

9990

Uniprot

Q9UHW9

Synonyms:

SLC12A6; ACCPN; KCC3; KCC3A; KCC3B

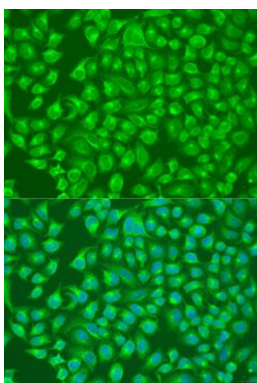
Immunogen:

Recombinant fusion protein containing a sequence corresponding to amino acids 60-190 of human SLC12A6 (NP_598408.1).

Storage:

Store at -20°C. Avoid freeze / thaw cycles. Buffer: PBS with 0.02% sodium azide, 50% glycerol, pH7.3.

Product Images



Immunofluorescence analysis of U2OS cells using SLC12A6 antibody (CAB8180) at dilution of 1:100. Blue: DAPI for nuclear staining.