

BCKDK Rabbit Polyclonal Antibody



CAB8184

Product Information

Size:

20uL, 50uL, 100uL, 200uL

Observed MW:

46kDa

Calculated MW:

37kDa/41kDa/46kDa

Applications:

WB IHC IF

Reactivity:

Human, Rat

Protein Background

The branched-chain alpha-ketoacid dehydrogenase complex (BCKD) is an important regulator of the valine, leucine, and isoleucine catabolic pathways. The protein encoded by this gene is found in the mitochondrion, where it phosphorylates and inactivates BCKD. Several transcript variants encoding different isoforms have been found for this gene.

Immunogen information

Gene ID:

10295

Uniprot

O14874

Synonyms:

BCKDK; BCKDKD; BDK

Antibody Information

Recommended dilutions:

WB 1:500 - 1:2000 IHC 1:50
- 1:100 IF 1:50 - 1:100

Source:

Rabbit

Isotype:

IgG

Purification:

Affinity purification

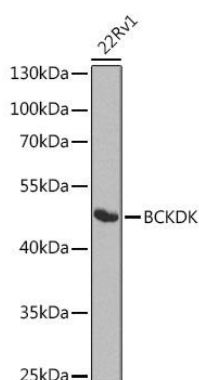
Immunogen:

Recombinant fusion protein containing a sequence corresponding to amino acids 153-412 of human BCKDK (NP_005872.2).

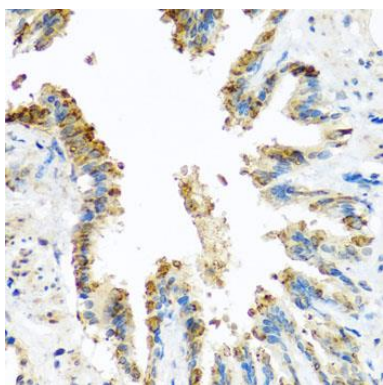
Storage:

Store at -20°C. Avoid freeze / thaw cycles. Buffer: PBS with 0.02% sodium azide, 50% glycerol, pH7.3.

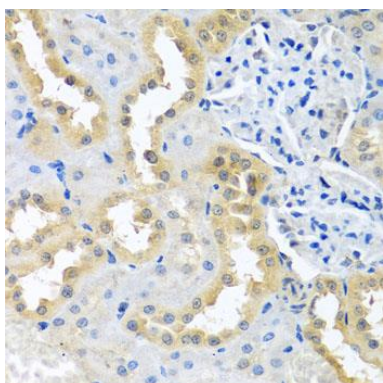
Product Images



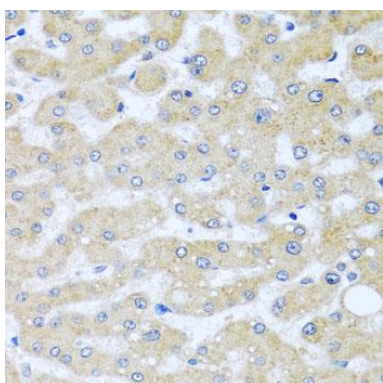
Western blot analysis of extracts of 22Rv1 cells, using BCKDK antibody (CAB8184) at 1:1000 dilution. Secondary antibody: HRP Goat Anti-Rabbit IgG (H+L) (CABS014) at 1:10000 dilution. Lysates/proteins: 25ug per lane. Blocking buffer: 3% nonfat dry milk in TBST. Detection: ECL Basic Kit (CABM00020). Exposure time: 90s.



Immunohistochemistry of paraffin-embedded rat lung using BCKDK antibody (CAB8184) at dilution of 1:100 (40x lens).



Immunohistochemistry of paraffin-embedded rat kidney using BCKDK antibody (CAB8184) at dilution of 1:100 (40x lens).



Immunohistochemistry of paraffin-embedded human liver damage using BCKDK antibody (CAB8184) at dilution of 1:100 (40x lens).