

ILF3 Rabbit Monoclonal Antibody



CAB8186

Product Information

Size:

20uL, 50uL, 100uL, 200uL

Observed MW:

90kDa/100kDa

Calculated MW:

95kDa

Applications:

WB IHC

Reactivity:

Human, Mouse, Rat

Antibody Information

Recommended dilutions:

WB 1:500 - 1:2000 IHC 1:50
- 1:200

Source:

Rabbit

Isotype:

IgG

Purification:

Affinity purification

Protein Background

This gene encodes a double-stranded RNA (dsRNA) binding protein that complexes with other proteins, dsRNAs, small noncoding RNAs, and mRNAs to regulate gene expression and stabilize mRNAs. This protein (NF90, ILF3) forms a heterodimer with a 45 kDa transcription factor (NF45, ILF2) required for T-cell expression of interleukin 2. This complex has been shown to affect the redistribution of nuclear mRNA to the cytoplasm. Knockdown of NF45 or NF90 protein retards cell growth, possibly by inhibition of mRNA stabilization. In contrast, an isoform (NF110) of this gene that is predominantly restricted to the nucleus has only minor effects on cell growth when its levels are reduced. Alternative splicing results in multiple transcript variants encoding distinct isoforms.[provided by RefSeq, Dec 2014]

Immunogen information

Gene ID:

3609

Uniprot

Q12906

Synonyms:

CBTF; DRBF; DRBP76; MMP4; MPHOSPH4; MPP4; NF-AT-90;
NF110; NF110b; NF90; NF90a; NF90b; NFAR; NFAR-1; NFAR2;
TCP110; TCP80

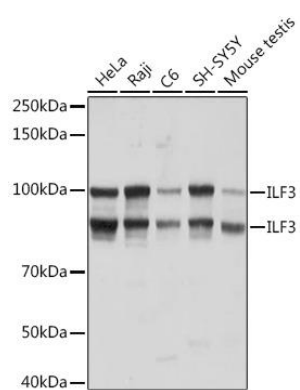
Immunogen:

A synthesized peptide derived from human ILF3

Storage:

Store at -20°C. Avoid freeze / thaw cycles. Buffer: PBS with 0.02% sodium azide, 0.05% BSA, 50% glycerol, pH7.3.

Product Images



Western blot - ILF3 Rabbit mAb (CAB8186)