

SLC9A6 Rabbit Polyclonal Antibody



CAB8187

Product Information

Size:

20uL, 50uL, 100uL, 200uL

Observed MW:

60kDa

Calculated MW:

72kDa/74kDa/77kDa

Applications:

WB

Reactivity:

Mouse

Protein Background

This gene encodes a sodium-hydrogen exchanger that is a member of the solute carrier family 9. The encoded protein localizes to early and recycling endosomes and may be involved in regulating endosomal pH and volume. Defects in this gene are associated with X-linked syndromic mental retardation, Christianson type. Alternate splicing results in multiple transcript variants.

Immunogen information

Gene ID:

10479

Uniprot

Q92581

Synonyms:

SLC9A6; MRSA; NHE6

Antibody Information

Recommended dilutions:

WB 1:500 - 1:2000

Source:

Rabbit

Isotype:

IgG

Purification:

Affinity purification

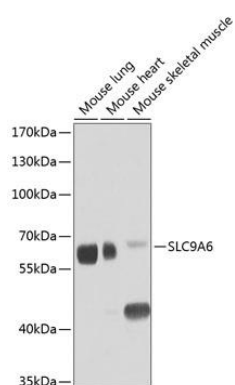
Immunogen:

Recombinant fusion protein containing a sequence corresponding to amino acids 542-701 of human SLC9A6 (NP_001036002.1).

Storage:

Store at -20°C. Avoid freeze / thaw cycles. Buffer: PBS with 0.02% sodium azide, 50% glycerol, pH7.3.

Product Images



Western blot analysis of extracts of various cell lines, using SLC9A6 antibody (CAB8187) at 1:1000 dilution. Secondary antibody: HRP Goat Anti-Rabbit IgG (H+L) (CABS014) at 1:10000 dilution. Lysates/proteins: 25ug per lane. Blocking buffer: 3% nonfat dry milk in TBST. Detection: ECL Basic Kit (CABM00020). Exposure time: 90s.