

IFI44 Rabbit Polyclonal Antibody



CAB8188

Product Information

Size:

20uL, 50uL, 100uL, 200uL

Observed MW:

50kDa

Calculated MW:

47kDa

Applications:

WB IHC IF

Reactivity:

Human, Rat

Antibody Information

Recommended dilutions:

WB 1:500 - 1:2000 IHC

1:100 - 1:200 IF 1:50 -

1:200

Source:

Rabbit

Isotype:

IgG

Purification:

Affinity purification

Protein Background

Immunogen information

Gene ID:

99899

Uniprot

Q8TCB0

Synonyms:

IFI44; MTAP44; TLDC5; p44

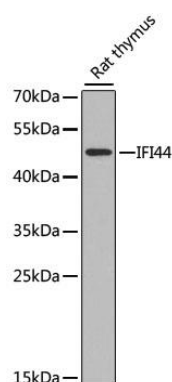
Immunogen:

A synthetic peptide of mouse IFI44

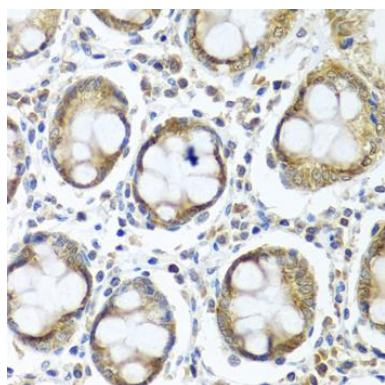
Storage:

Store at -20°C. Avoid freeze / thaw cycles. Buffer: PBS with 0.02% sodium azide, 50% glycerol, pH7.3.

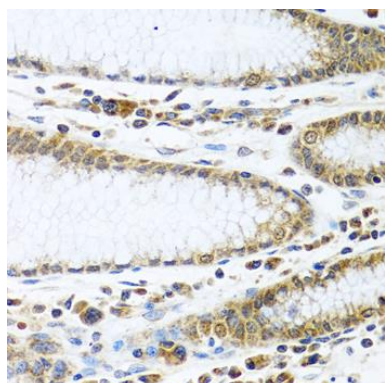
Product Images



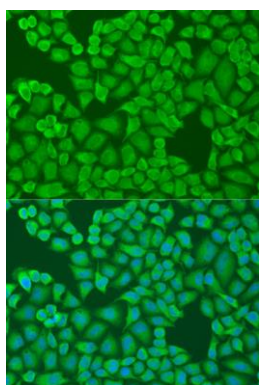
Western blot analysis of extracts of rat thymus, using IFI44 antibody (CAB8188) at 1:1000 dilution. Secondary antibody: HRP Goat Anti-Rabbit IgG (H+L) (CABS014) at 1:10000 dilution. Lysates/proteins: 25ug per lane. Blocking buffer: 3% nonfat dry milk in TBST. Detection: ECL Enhanced Kit (CABM00021). Exposure time: 90s.



Immunohistochemistry of paraffin-embedded human colon using IFI44 antibody (CAB8188) at dilution of 1:100 (40x lens).



Immunohistochemistry of paraffin-embedded human stomach using IFI44 antibody (CAB8188) at dilution of 1:100 (40x lens).



Immunofluorescence analysis of U2OS cells using IFI44 antibody (CAB8188) at dilution of 1:100. Blue: DAPI for nuclear staining.