

ATP6 Rabbit Polyclonal Antibody



CAB8193

Product Information

Size:

20uL, 50uL, 100uL, 200uL

Observed MW:

20kDa

Calculated MW:

25kDa

Applications:

WB IHC IF

Reactivity:

Human, Mouse

Antibody Information

Recommended dilutions:

WB 1:500 - 1:2000 IHC

1:100 - 1:200 IF 1:50 -

1:200

Source:

Rabbit

Isotype:

IgG

Purification:

Affinity purification

Protein Background

Immunogen information

Gene ID:

17705

Uniprot

P00848

Synonyms:

MT-ATP6; ATPase6; MTATP6; ATP6

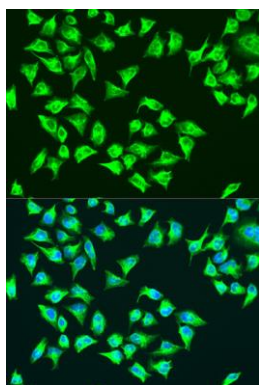
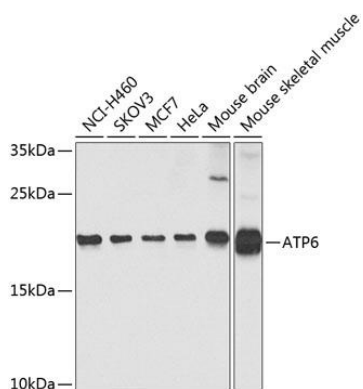
Immunogen:

A synthetic peptide corresponding to a sequence within amino acids 100 to the C-terminus of mouse ATP6 (NP_904333.1).

Storage:

Store at -20°C. Avoid freeze / thaw cycles. Buffer: PBS with 0.02% sodium azide, 50% glycerol, pH7.3.

Product Images



Western blot analysis of extracts of various cell lines, using ATP6 antibody (CAB8193) at 1:1000 dilution. Secondary antibody: HRP Goat Anti-Rabbit IgG (H+L) (CABS014) at 1:10000 dilution. Lysates/proteins: 25ug per lane. Blocking buffer: 3% nonfat dry milk in TBST. Detection: ECL Enhanced Kit (CABM00021). Exposure time: 10s.

Immunofluorescence analysis of U2OS cells using ATP6 antibody (CAB8193) at dilution of 1:100. Blue: DAPI for nuclear staining.