

ARFGAP3 Rabbit Polyclonal Antibody



CAB8204

Product Information

Size:

20uL, 50uL, 100uL, 200uL

Observed MW:

57kDa

Calculated MW:

51kDa/56kDa

Applications:

WB IHC

Reactivity:

Human, Mouse

Antibody Information

Recommended dilutions:

WB 1:500 - 1:2000 IHC 1:50
- 1:100

Source:

Rabbit

Isotype:

IgG

Purification:

Affinity purification

Protein Background

The protein encoded by this gene is a GTPase-activating protein (GAP) that associates with the Golgi apparatus and regulates the early secretory pathway of proteins. The encoded protein promotes hydrolysis of ADP-ribosylation factor 1 (ARF1)-bound GTP, which is required for the dissociation of coat proteins from Golgi-derived membranes and vesicles. Dissociation of the coat proteins is a prerequisite for the fusion of these vesicles with target compartments. The activity of this protein is sensitive to phospholipids. Multiple transcript variants encoding different isoforms have been found for this gene. This gene was originally known as ARFGAP1, but that is now the name of a related but different gene.

Immunogen information

Gene ID:

26286

Uniprot

Q9NP61

Synonyms:

ARFGAP3; ARFGAP1

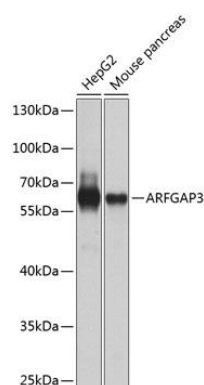
Immunogen:

Recombinant fusion protein containing a sequence corresponding to amino acids 217-516 of human ARFGAP3 (NP_055385.3).

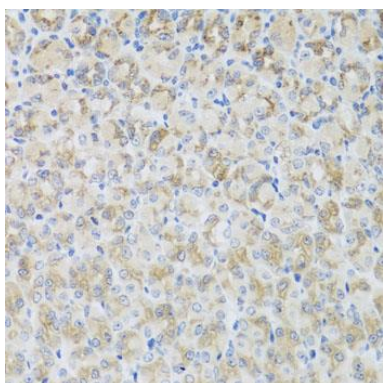
Storage:

Store at -20°C. Avoid freeze / thaw cycles. Buffer: PBS with 0.02% sodium azide, 50% glycerol, pH7.3.

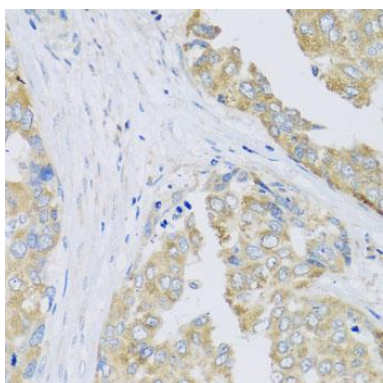
Product Images



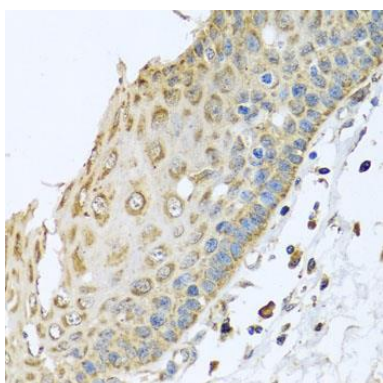
Western blot analysis of extracts of various cell lines, using ARFGAP3 antibody (CAB8204) at 1:1000 dilution. Secondary antibody: HRP Goat Anti-Rabbit IgG (H+L) (CABS014) at 1:10000 dilution. Lysates/proteins: 25ug per lane. Blocking buffer: 3% nonfat dry milk in TBST. Detection: ECL Basic Kit (CABM00020). Exposure time: 30s.



Immunohistochemistry of paraffin-embedded mouse stomach using ARFGAP3 antibody (CAB8204) at dilution of 1:100 (40x lens).



Immunohistochemistry of paraffin-embedded human liver cancer using ARFGAP3 antibody (CAB8204) at dilution of 1:100 (40x lens).



Immunohistochemistry of paraffin-embedded human esophagus using ARFGAP3 antibody (CAB8204) at dilution of 1:100 (40x lens).