

# SOST Rabbit Polyclonal Antibody



CAB8213

## Product Information

### Size:

20uL, 50uL, 100uL, 200uL

### Observed MW:

30kDa

### Calculated MW:

24kDa

### Applications:

WB IHC

### Reactivity:

Human, Mouse

## Protein Background

Sclerostin is a secreted glycoprotein with a C-terminal cysteine knot-like (CTCK) domain and sequence similarity to the DAN (differential screening-selected gene aberrative in neuroblastoma) family of bone morphogenetic protein (BMP) antagonists. Loss-of-function mutations in this gene are associated with an autosomal-recessive disorder, sclerosteosis, which causes progressive bone overgrowth. A deletion downstream of this gene, which causes reduced sclerostin expression, is associated with a milder form of the disorder called van Buchem disease.

## Immunogen information

### Gene ID:

50964

### Uniprot

Q9BQB4

### Synonyms:

SOST; CDD; DAND6; SOST1; VBCH

## Antibody Information

### Recommended dilutions:

WB 1:500 - 1:2000 IHC 1:50  
- 1:100

### Source:

Rabbit

### Isotype:

IgG

### Purification:

Affinity purification

### Immunogen:

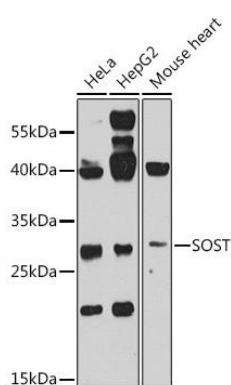
Recombinant fusion protein containing a sequence corresponding to amino acids 24-213 of human SOST (NP\_079513.1).

### Storage:

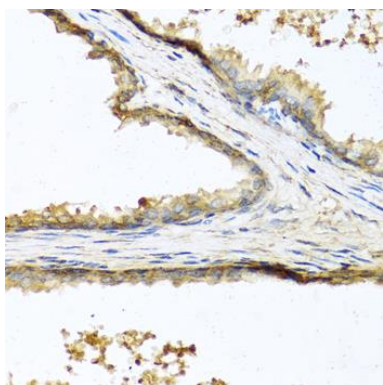
Store at -20°C. Avoid freeze / thaw cycles. Buffer: PBS with 0.02% sodium azide, 50% glycerol, pH7.3.

## Product Images

---



Western blot analysis of extracts of various cell lines, using SOST antibody (CAB8213) at 1:1000 dilution. Secondary antibody: HRP Goat Anti-Rabbit IgG (H+L) (CABS014) at 1:10000 dilution. Lysates/proteins: 25ug per lane. Blocking buffer: 3% nonfat dry milk in TBST. Detection: ECL Enhanced Kit (CABM00021). Exposure time: 30s.



Immunohistochemistry of paraffin-embedded human prostate using SOST antibody (CAB8213) at dilution of 1:100 (40x lens).