

NIN Rabbit Polyclonal Antibody



CAB8215

Product Information

Size:

20uL, 50uL, 100uL, 200uL

Observed MW:

190kDa

Calculated MW:

147kDa/160kDa/236-248kDa

Applications:

WB IHC IF

Reactivity:

Human, Mouse, Rat

Protein Background

This gene encodes one of the proteins important for centrosomal function. This protein is important for positioning and anchoring the microtubules minus-ends in epithelial cells. Localization of this protein to the centrosome requires three leucine zippers in the central coiled-coil domain. Multiple alternatively spliced transcript variants that encode different isoforms have been reported.

Immunogen information

Gene ID:

51199

Uniprot

Q8N4C6

Synonyms:

NIN; SCKL7; ninein

Antibody Information

Recommended dilutions:

WB 1:500 - 1:1000 IHC 1:50
- 1:100 IF 1:50 - 1:100

Source:

Rabbit

Isotype:

IgG

Purification:

Affinity purification

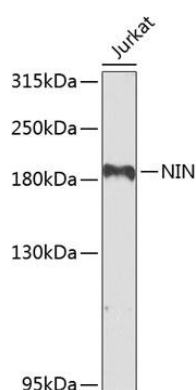
Immunogen:

Recombinant fusion protein containing a sequence corresponding to amino acids 1-287 of human NIN (NP_891991.1).

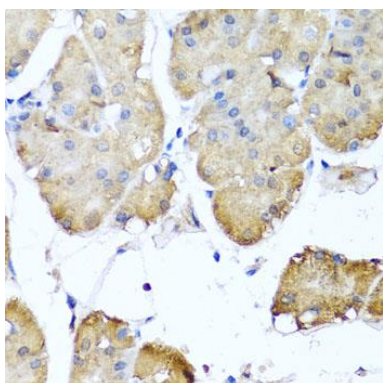
Storage:

Store at -20°C. Avoid freeze / thaw cycles. Buffer: PBS with 0.02% sodium azide, 50% glycerol, pH7.3.

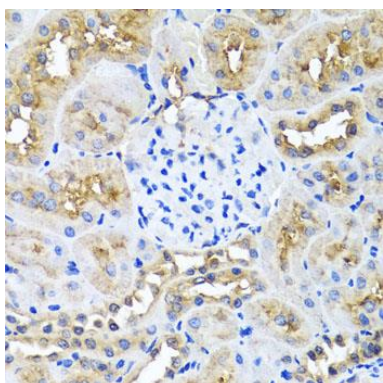
Product Images



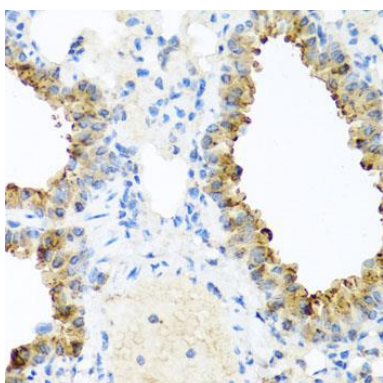
Western blot analysis of extracts of Jurkat cells, using NIN antibody (CAB8215) at 1:1000 dilution. Secondary antibody: HRP Goat Anti-Rabbit IgG (H+L) (CABS014) at 1:10000 dilution. Lysates/proteins: 25ug per lane. Blocking buffer: 3% nonfat dry milk in TBST. Detection: ECL Enhanced Kit (CABM00021). Exposure time: 90s.



Immunohistochemistry of paraffin-embedded human stomach using NIN antibody (CAB8215) at dilution of 1:100 (40x lens).



Immunohistochemistry of paraffin-embedded rat kidney using NIN antibody (CAB8215) at dilution of 1:100 (40x lens).



Immunohistochemistry of paraffin-embedded mouse lung using NIN antibody (CAB8215) at dilution of 1:100 (40x lens).