

CEP55 Rabbit Polyclonal Antibody



CAB8229

Product Information

Size:

20uL, 50uL, 100uL, 200uL

Observed MW:

60kDa

Calculated MW:

46kDa/54kDa

Applications:

WB IF

Reactivity:

Human, Mouse, Rat

Antibody Information

Recommended dilutions:

WB 1:500 - 1:2000 IF 1:50 - 1:200

Source:

Rabbit

Isotype:

IgG

Purification:

Affinity purification

Protein Background

Immunogen information

Gene ID:

55165

Uniprot

Q53EZ4

Synonyms:

CEP55; C10orf3; CT111; URCC6

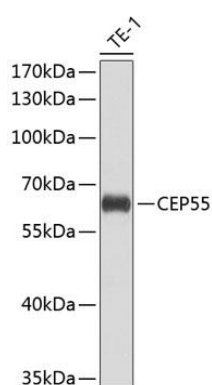
Immunogen:

Recombinant fusion protein containing a sequence corresponding to amino acids 1-260 of human CEP55 (NP_060601.3).

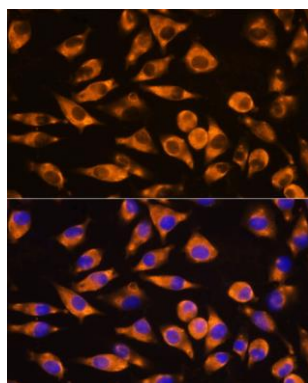
Storage:

Store at -20°C. Avoid freeze / thaw cycles. Buffer: PBS with 0.02% sodium azide, 50% glycerol, pH7.3.

Product Images



Western blot analysis of extracts of THP-1 cells, using CEP55 antibody (CAB8229) at 1:1000 dilution. Secondary antibody: HRP Goat Anti-Rabbit IgG (H+L) (CABS014) at 1:10000 dilution. Lysates/proteins: 25ug per lane. Blocking buffer: 3% nonfat dry milk in TBST. Detection: ECL Basic Kit (CABM00020). Exposure time: 15s.



Immunofluorescence analysis of L929 cells using CEP55 antibody (CAB8229) at dilution of 1:100. Blue: DAPI for nuclear staining.