

# ATAD3A Rabbit Polyclonal Antibody



CAB8230

---

## Product Information

### Size:

20uL, 50uL, 100uL, 200uL

### Observed MW:

70kDa

### Calculated MW:

57kDa/66kDa/71kDa

### Applications:

WB IHC

### Reactivity:

Human, Mouse

## Antibody Information

### Recommended dilutions:

WB 1:500 - 1:2000 IHC

1:100 - 1:200

### Source:

Rabbit

### Isotype:

IgG

### Purification:

Affinity purification

## Protein Background

### Immunogen information

#### Gene ID:

55210

#### Uniprot

Q9NVI7

#### Synonyms:

ATAD3A; HAYOS; ATPase family

#### Immunogen:

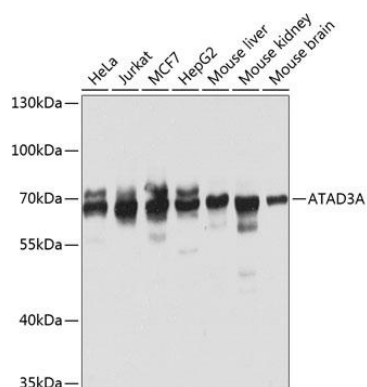
Recombinant fusion protein containing a sequence corresponding to amino acids 1-240 of human ATAD3A (NP\_001164006.1).

#### Storage:

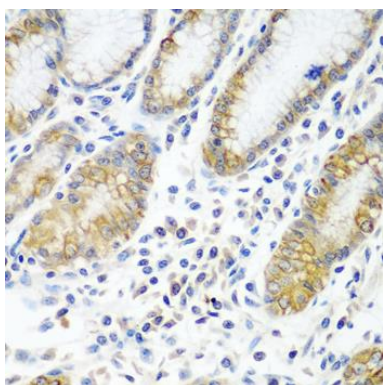
Store at -20°C. Avoid freeze / thaw cycles. Buffer: PBS with 0.02% sodium azide, 50% glycerol, pH7.3.

## Product Images

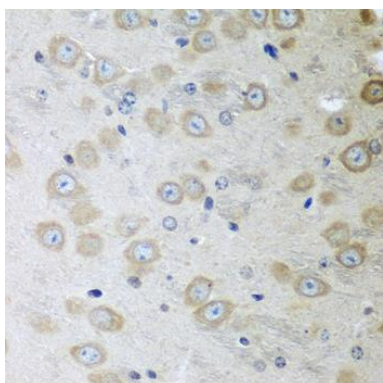
---



Western blot analysis of extracts of various cell lines, using ATAD3A antibody (CAB8230) at 1:1000 dilution. Secondary antibody: HRP Goat Anti-Rabbit IgG (H+L) (CABS014) at 1:10000 dilution. Lysates/proteins: 25ug per lane. Blocking buffer: 3% nonfat dry milk in TBST. Detection: ECL Basic Kit (CABM00020). Exposure time: 10s.



Immunohistochemistry of paraffin-embedded human stomach using ATAD3A antibody (CAB8230) at dilution of 1:100 (40x lens).



Immunohistochemistry of paraffin-embedded mouse brain using ATAD3A antibody (CAB8230) at dilution of 1:100 (40x lens).