

NLRP2 Rabbit Polyclonal Antibody



CAB8233

Product Information

Size:

20uL, 50uL, 100uL, 200uL

Observed MW:

121kDa

Calculated MW:

96kDa/117kDa/118kDa/120kDa

Applications:

WB IF

Reactivity:

Human

Antibody Information

Recommended dilutions:

WB 1:500 - 1:2000 IF 1:50 - 1:200

Source:

Rabbit

Isotype:

IgG

Purification:

Affinity purification

Protein Background

This gene is a member of the nucleotide-binding and leucine-rich repeat receptor (NLR) family, and is predicted to contain an N-terminal pyrin effector domain (PYD), a centrally-located nucleotide-binding and oligomerization domain (NACHT) and C-terminal leucine-rich repeats (LRR). Members of this gene family are thought to be important regulators of immune responses. This gene product interacts with components of the I κ B kinase (IKK) complex, and can regulate both caspase-1 and NF- κ B (nuclear factor kappa-light-chain-enhancer of activated B cells) activity. The pyrin domain is necessary and sufficient for suppression of NF- κ B activity. An allelic variant (rs147585490) has been found that is incapable of blocking the transcriptional activity of NF- κ B. Alternative splicing results in multiple transcript variants encoding different isoforms.

Immunogen information

Gene ID:

55655

Uniprot

Q9NX02

Synonyms:

NLRP2; CLR19.9; NALP2; NBS1; PAN1; PYPAF2

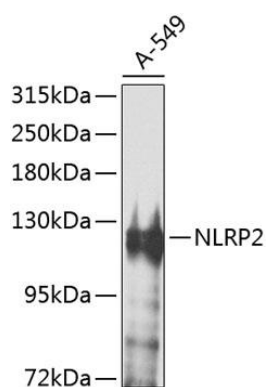
Immunogen:

Recombinant fusion protein containing a sequence corresponding to amino acids 1-220 of human NLRP2 (NP_060322.1).

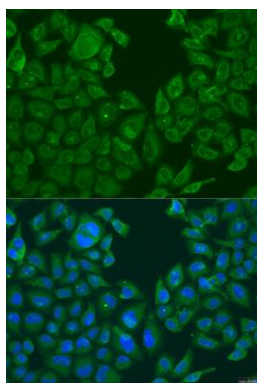
Storage:

Store at -20°C. Avoid freeze / thaw cycles. Buffer: PBS with 0.02% sodium azide, 50% glycerol, pH7.3.

Product Images



Western blot analysis of extracts of A-549 cells, using NLRP2 antibody (CAB8233) at 1:1000 dilution. Secondary antibody: HRP Goat Anti-Rabbit IgG (H+L) (CABS014) at 1:10000 dilution. Lysates/proteins: 25ug per lane. Blocking buffer: 3% nonfat dry milk in TBST. Detection: ECL Basic Kit (CABM00020). Exposure time: 90s.



Immunofluorescence analysis of U2OS cells using NLRP2 antibody (CAB8233) at dilution of 1:100. Blue: DAPI for nuclear staining.