

# CHMP1B Rabbit Polyclonal Antibody



CAB8239

## Product Information

### Size:

20uL, 50uL, 100uL, 200uL

### Observed MW:

30kDa

### Calculated MW:

22kDa

### Applications:

WB IHC

### Reactivity:

Human, Mouse, Rat

## Antibody Information

### Recommended dilutions:

WB 1:500 - 1:2000 IHC 1:50  
- 1:100

### Source:

Rabbit

### Isotype:

IgG

### Purification:

Affinity purification

## Protein Background

### Immunogen information

#### Gene ID:

57132

#### Uniprot

Q7LBR1

#### Synonyms:

CHMP1B; C10orf2; C18-ORF2; C18orf2; CHMP1.5; Vps46-2;  
Vps46B; hVps46-2

#### Immunogen:

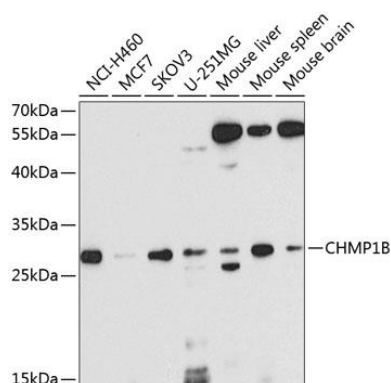
Recombinant fusion protein containing a sequence corresponding to amino acids 1-199 of human CHMP1B (NP\_065145.2).

#### Storage:

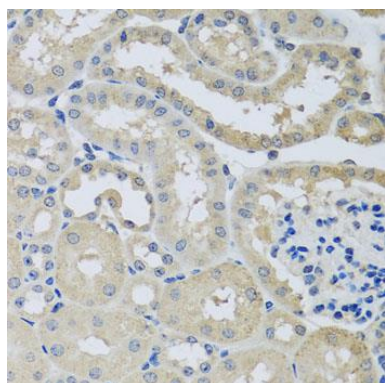
Store at -20°C. Avoid freeze / thaw cycles. Buffer: PBS with 0.02% sodium azide, 50% glycerol, pH7.3.

## Product Images

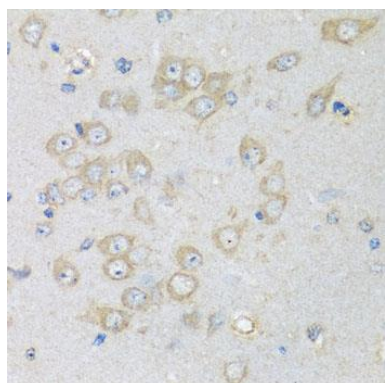
---



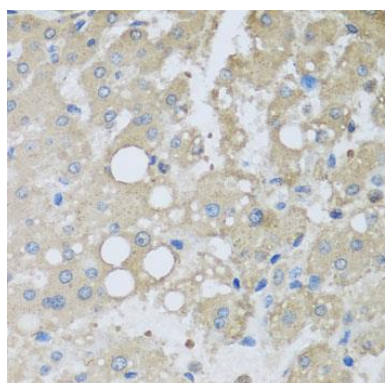
Western blot analysis of extracts of various cell lines, using CHMP1B antibody (CAB8239) at 1:1000 dilution. Secondary antibody: HRP Goat Anti-Rabbit IgG (H+L) (CABS014) at 1:10000 dilution. Lysates/proteins: 25ug per lane. Blocking buffer: 3% nonfat dry milk in TBST. Detection: ECL Basic Kit (CABM00020). Exposure time: 90s.



Immunohistochemistry of paraffin-embedded mouse kidney using CHMP1B antibody (CAB8239) at dilution of 1:100 (40x lens).



Immunohistochemistry of paraffin-embedded rat brain using CHMP1B antibody (CAB8239) at dilution of 1:100 (40x lens).



Immunohistochemistry of paraffin-embedded human liver damage using CHMP1B antibody (CAB8239) at dilution of 1:100 (40x lens).