

# HPSE2 Rabbit Polyclonal Antibody



CAB8248

## Product Information

### Size:

20uL, 50uL, 100uL, 200uL

### Observed MW:

72kDa

### Calculated MW:

53kDa/60kDa/61kDa/66kDa

### Applications:

WB IHC

### Reactivity:

Human, Mouse, Rat

## Antibody Information

### Recommended dilutions:

WB 1:500 - 1:2000 IHC 1:50  
- 1:100

### Source:

Rabbit

### Isotype:

IgG

### Purification:

Affinity purification

## Protein Background

This gene encodes a heparanase enzyme. The encoded protein is an endoglycosidase that degrades heparin sulfate proteoglycans located on the extracellular matrix and cell surface. This protein may be involved in biological processes involving remodeling of the extracellular matrix including angiogenesis and tumor progression. Alternate splicing results in multiple transcript variants.

## Immunogen information

### Gene ID:

60495

### Uniprot

Q8WWQ2

### Synonyms:

HPSE2; HPA2; HPR2; UFS; UFS1

### Immunogen:

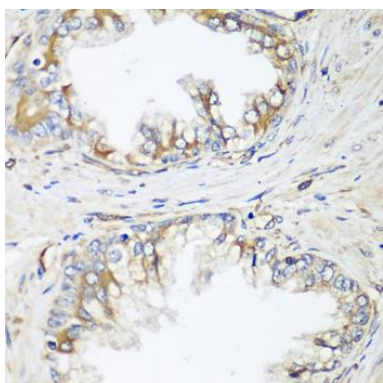
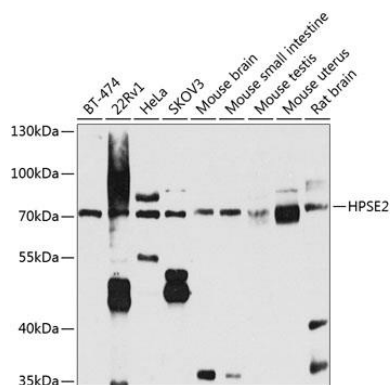
Recombinant fusion protein containing a sequence corresponding to amino acids 42-242 of human HPSE2 (NP\_068600.4).

### Storage:

Store at -20°C. Avoid freeze / thaw cycles. Buffer: PBS with 0.02% sodium azide, 50% glycerol, pH7.3.

## Product Images

---



Western blot analysis of extracts of various cell lines, using HPSE2 antibody (CAB8248) at 1:1000 dilution. Secondary antibody: HRP Goat Anti-Rabbit IgG (H+L) (CABS014) at 1:10000 dilution. Lysates/proteins: 25ug per lane. Blocking buffer: 3% nonfat dry milk in TBST. Detection: ECL Basic Kit (CABM00020). Exposure time: 90s.

Immunohistochemistry of paraffin-embedded human prostate using HPSE2 antibody (CAB8248) at dilution of 1:100 (40x lens).