

# HAUS3 Rabbit Polyclonal Antibody



CAB8258

## Product Information

### Size:

20uL, 50uL, 100uL, 200uL

### Observed MW:

80kDa

### Calculated MW:

56kDa/69kDa

### Applications:

WB

### Reactivity:

Human, Mouse, Rat

## Antibody Information

### Recommended dilutions:

WB 1:500 - 1:2000

### Source:

Rabbit

### Isotype:

IgG

### Purification:

Affinity purification

## Protein Background

This gene encodes a component of the HAUS augmin-like protein complex, which plays a key role in cytokinesis and mitosis. Disruption of the encoded protein causes mitotic defects resulting from fragmentation of centrosomes and microtubule destabilization. This gene shares its 5' exons with some transcripts from overlapping GeneID: 353497, which encodes a DNA polymerase. Alternative splicing results in multiple transcript variants.

## Immunogen information

### Gene ID:

79441

### Uniprot

Q68CZ6

### Synonyms:

HAUS3; C4orf15; IT1; dgt3

### Immunogen:

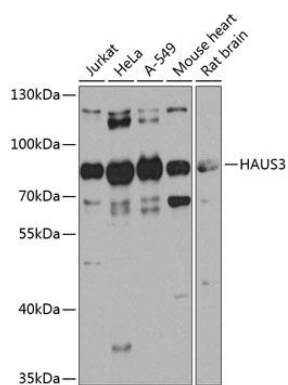
Recombinant fusion protein containing a sequence corresponding to amino acids 384-603 of human HAUS3 (NP\_078787.2).

### Storage:

Store at -20°C. Avoid freeze / thaw cycles. Buffer: PBS with 0.02% sodium azide, 50% glycerol, pH7.3.

## Product Images

---



Western blot analysis of extracts of various cell lines, using HAUS3 antibody (CAB8258) at 1:1000 dilution. Secondary antibody: HRP Goat Anti-Rabbit IgG (H+L) (CABS014) at 1:10000 dilution. Lysates/proteins: 25ug per lane. Blocking buffer: 3% nonfat dry milk in TBST. Detection: ECL Basic Kit (CABM00020). Exposure time: 60s.