

# CCDC92 Rabbit Polyclonal Antibody



CAB8262

---

## Product Information

### Size:

20uL, 50uL, 100uL, 200uL

### Observed MW:

37kDa

### Calculated MW:

35kDa/36kDa

### Applications:

WB IHC

### Reactivity:

Human

## Antibody Information

### Recommended dilutions:

WB 1:500 - 1:2000 IHC 1:50  
- 1:200

### Source:

Rabbit

### Isotype:

IgG

### Purification:

Affinity purification

## Protein Background

### Immunogen information

#### Gene ID:

80212

#### Uniprot

Q53HC0

#### Synonyms:

CCDC92

#### Immunogen:

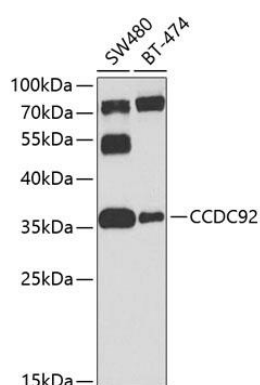
Recombinant fusion protein containing a sequence corresponding to amino acids 1-331 of human CCDC92 (NP\_079416.1).

#### Storage:

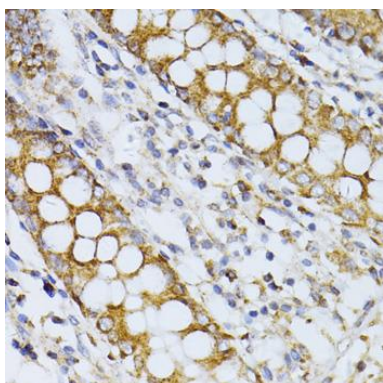
Store at -20°C. Avoid freeze / thaw cycles. Buffer: PBS with 0.02% sodium azide, 50% glycerol, pH7.3.

## Product Images

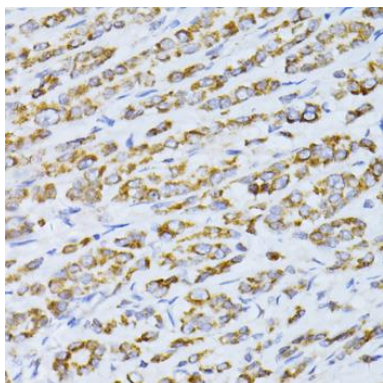
---



Western blot analysis of extracts of various cell lines, using CCDC92 antibody (CAB8262) at 1:1000 dilution. Secondary antibody: HRP Goat Anti-Rabbit IgG (H+L) (CABS014) at 1:10000 dilution. Lysates/proteins: 25ug per lane. Blocking buffer: 3% nonfat dry milk in TBST. Detection: ECL Basic Kit (CABM00020). Exposure time: 60s.



Immunohistochemistry of paraffin-embedded human colon using CCDC92 antibody (CAB8262) at dilution of 1:100 (40x lens).



Immunohistochemistry of paraffin-embedded human colon carcinoma using CCDC92 antibody (CAB8262) at dilution of 1:100 (40x lens).