

DNAL1 Rabbit Polyclonal Antibody



CAB8267

Product Information

Size:

20uL, 50uL, 100uL, 200uL

Observed MW:

22kDa

Calculated MW:

8kDa/17kDa/21kDa

Applications:

WB IHC IF

Reactivity:

Human, Mouse, Rat

Protein Background

This gene encodes an axonemal dynein light chain which functions as a component of the outer dynein arms complex. This complex acts as the molecular motor that provides the force to move cilia in an ATP-dependent manner. The encoded protein is expressed in tissues with motile cilia or flagella and may be involved in the movement of sperm flagella. Alternate splicing results in multiple transcript variants.

Immunogen information

Gene ID:

83544

Uniprot

Q4LDG9

Synonyms:

DNAL1; C14orf168; CILD16

Antibody Information

Recommended dilutions:

WB 1:500 - 1:2000 IHC 1:50
- 1:100 IF 1:50 - 1:100

Source:

Rabbit

Isotype:

IgG

Purification:

Affinity purification

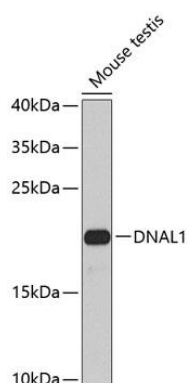
Immunogen:

Recombinant fusion protein containing a sequence corresponding to amino acids 41-190 of human DNAL1 (NP_113615.2).

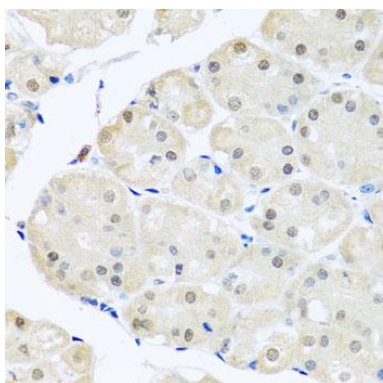
Storage:

Store at -20°C. Avoid freeze / thaw cycles. Buffer: PBS with 0.02% sodium azide, 50% glycerol, pH7.3.

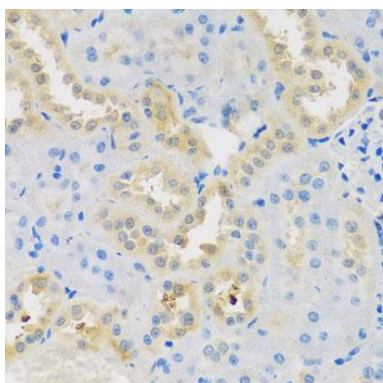
Product Images



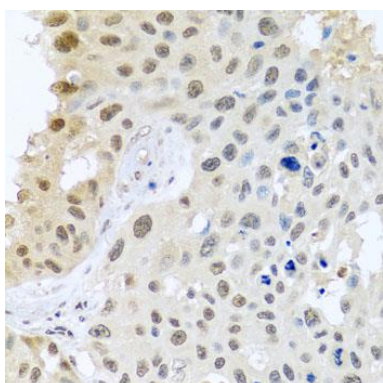
Western blot analysis of extracts of mouse testis, using DNAL1 antibody (CAB8267) at 1:1000 dilution. Secondary antibody: HRP Goat Anti-Rabbit IgG (H+L) (CABS014) at 1:10000 dilution. Lysates/proteins: 25ug per lane. Blocking buffer: 3% nonfat dry milk in TBST. Detection: ECL Basic Kit (CABM00020). Exposure time: 90s.



Immunohistochemistry of paraffin-embedded human stomach using DNAL1 antibody (CAB8267) at dilution of 1:100 (40x lens).



Immunohistochemistry of paraffin-embedded rat kidney using DNAL1 antibody (CAB8267) at dilution of 1:100 (40x lens).



Immunohistochemistry of paraffin-embedded human lung cancer using DNAL1 antibody (CAB8267) at dilution of 1:100 (40x lens).