

# ATAD3B Rabbit Polyclonal Antibody



CAB8268

## Product Information

### Size:

20uL, 50uL, 100uL, 200uL

### Observed MW:

68kDa

### Calculated MW:

19kDa/67kDa/72kDa

### Applications:

WB IHC IF

### Reactivity:

Human, Mouse, Rat

## Protein Background

The protein encoded by this gene is localized to the mitochondrial inner membrane, where it can bind to a highly-related protein, ATAD3A. ATAD3A appears to interact with matrix nucleoid complexes, and the encoded protein negatively regulates that interaction. This gene is expressed almost exclusively in pluripotent embryonic stem cells and some cancer cells. Two transcript variants encoding different isoforms have been found for this gene.

## Immunogen information

### Gene ID:

83858

### Uniprot

Q5T9A4

### Synonyms:

ATAD3B; AAA-TOB3; TOB3; ATPase family

## Antibody Information

### Recommended dilutions:

WB 1:500 - 1:2000 IHC 1:50  
- 1:100 IF 1:50 - 1:200

### Source:

Rabbit

### Isotype:

IgG

### Purification:

Affinity purification

### Immunogen:

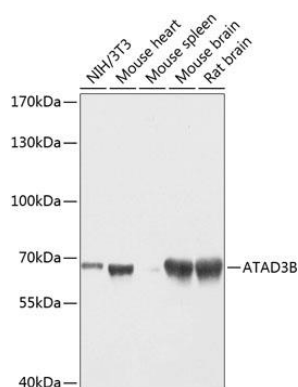
Recombinant fusion protein containing a sequence corresponding to amino acids 1-240 of human ATAD3B (NP\_114127.3).

### Storage:

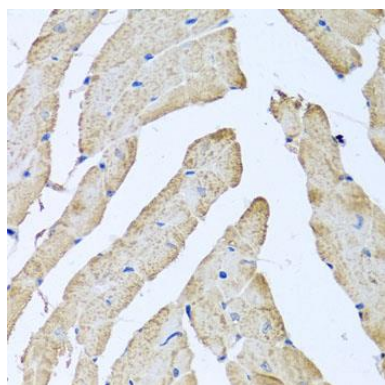
Store at -20°C. Avoid freeze / thaw cycles. Buffer: PBS with 0.02% sodium azide, 50% glycerol, pH7.3.

## Product Images

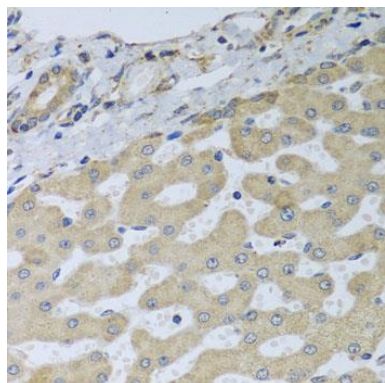
---



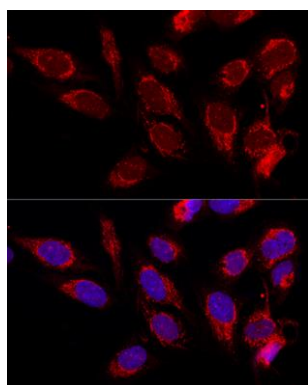
Western blot analysis of extracts of various cell lines, using ATAD3B antibody (CAB8268) at 1:1000 dilution. Secondary antibody: HRP Goat Anti-Rabbit IgG (H+L) (CABS014) at 1:10000 dilution. Lysates/proteins: 25ug per lane. Blocking buffer: 3% nonfat dry milk in TBST. Detection: ECL Basic Kit (CABM00020). Exposure time: 5s.



Immunohistochemistry of paraffin-embedded mouse heart using ATAD3B antibody (CAB8268) at dilution of 1:100 (40x lens).



Immunohistochemistry of paraffin-embedded human liver tissue using ATAD3B antibody (CAB8268) at dilution of 1:100 (40x lens).



Confocal immunofluorescence analysis of U2OS cells using ATAD3B Polyclonal Antibody (CAB8268) at dilution of 1:100. Blue: DAPI for nuclear staining.