

ARL6 Rabbit Polyclonal Antibody



CAB8269

Product Information

Size:

20uL, 50uL, 100uL, 200uL

Observed MW:

21kDa

Calculated MW:

21kDa

Applications:

WB IHC

Reactivity:

Human, Mouse

Protein Background

The protein encoded by this gene belongs to the ARF-like (ADP ribosylation factor-like) sub-family of the ARF family of GTP-binding proteins which are involved in regulation of intracellular traffic. Mutations in this gene are associated with Bardet-Biedl syndrome (BBS). Alternative splicing results in multiple transcript variants of this gene. A vision-specific transcript encoding a different protein has been described (PMID: 20333246).

Immunogen information

Gene ID:

84100

Uniprot

Q9H0F7

Synonyms:

ARL6; BBS3; RP55

Antibody Information

Recommended dilutions:

WB 1:500 - 1:2000 IHC 1:50
- 1:100

Source:

Rabbit

Isotype:

IgG

Purification:

Affinity purification

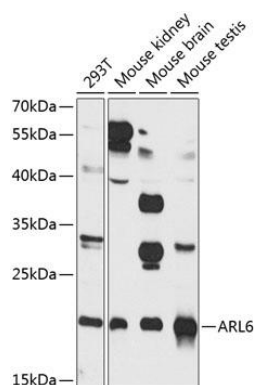
Immunogen:

Recombinant fusion protein containing a sequence corresponding to amino acids 1-186 of human ARL6 (NP_115522.1).

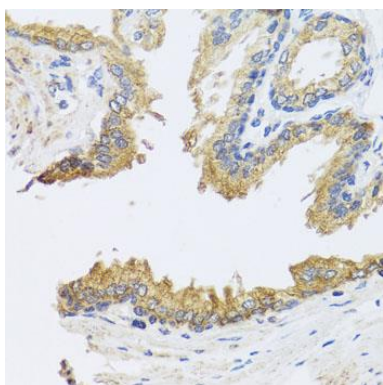
Storage:

Store at -20°C. Avoid freeze / thaw cycles. Buffer: PBS with 0.02% sodium azide, 50% glycerol, pH7.3.

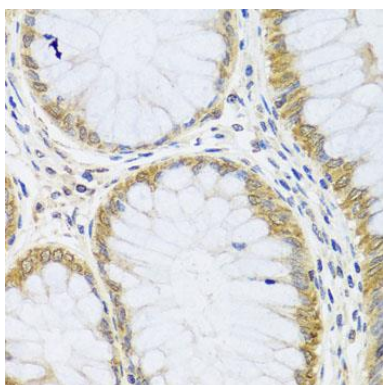
Product Images



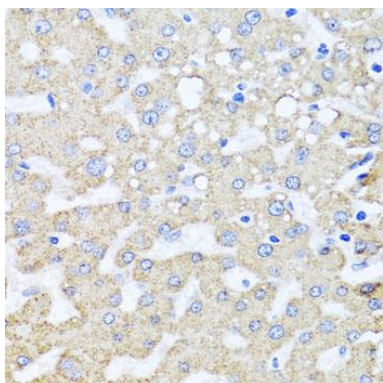
Western blot analysis of extracts of various cell lines, using ARL6 antibody (CAB8269) at 1:1000 dilution. Secondary antibody: HRP Goat Anti-Rabbit IgG (H+L) (CABS014) at 1:10000 dilution. Lysates/proteins: 25ug per lane. Blocking buffer: 3% nonfat dry milk in TBST. Detection: ECL Basic Kit (CABM00020). Exposure time: 90s.



Immunohistochemistry of paraffin-embedded human prostate using ARL6 antibody (CAB8269) at dilution of 1:100 (40x lens).



Immunohistochemistry of paraffin-embedded human colon using ARL6 antibody (CAB8269) at dilution of 1:100 (40x lens).



Immunohistochemistry of paraffin-embedded human liver damage using ARL6 antibody (CAB8269) at dilution of 1:100 (40x lens).