

RNF166 Rabbit Polyclonal Antibody



CAB8276

Product Information

Size:

20uL, 50uL, 100uL, 200uL

Observed MW:

26kDa

Calculated MW:

14kDa/17kDa/26kDa

Applications:

WB IHC

Reactivity:

Human, Mouse, Rat

Antibody Information

Recommended dilutions:

WB 1:500 - 1:2000 IHC 1:50
- 1:200

Source:

Rabbit

Isotype:

IgG

Purification:

Affinity purification

Protein Background

Immunogen information

Gene ID:

115992

Uniprot

Q96A37

Synonyms:

RNF166

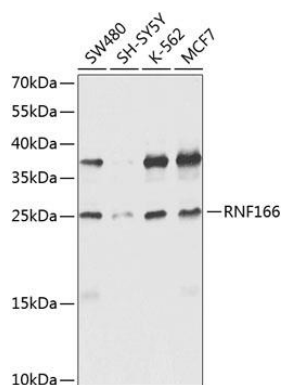
Immunogen:

A synthetic peptide corresponding to a sequence within amino acids 100 to the C-terminus of human RNF166 (NP_849163.1).

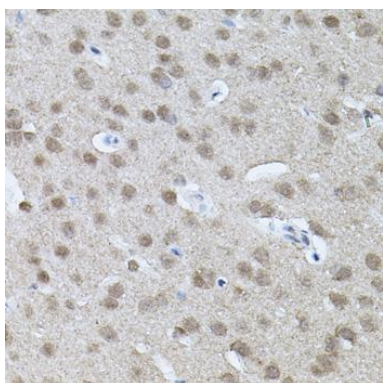
Storage:

Store at -20°C. Avoid freeze / thaw cycles. Buffer: PBS with 0.02% sodium azide, 50% glycerol, pH7.3.

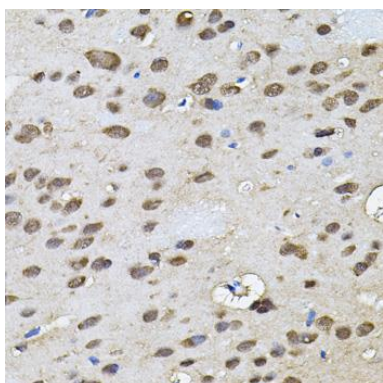
Product Images



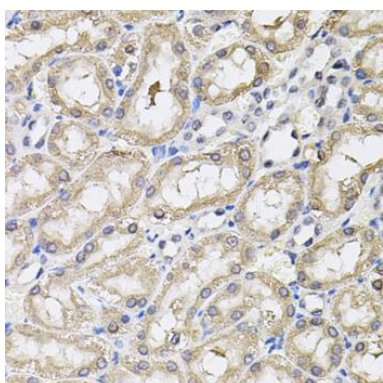
Western blot analysis of extracts of various cell lines, using RNF166 antibody (CAB8276) at 1:1000 dilution. Secondary antibody: HRP Goat Anti-Rabbit IgG (H+L) (CABS014) at 1:10000 dilution. Lysates/proteins: 25ug per lane. Blocking buffer: 3% nonfat dry milk in TBST. Detection: ECL Enhanced Kit (CABM00021). Exposure time: 15s.



Immunohistochemistry of paraffin-embedded mouse brain using RNF166 antibody (CAB8276) (40x lens).



Immunohistochemistry of paraffin-embedded rat brain using RNF166 antibody (CAB8276) (40x lens).



Immunohistochemistry of paraffin-embedded rat kidney using RNF166 antibody (CAB8276) (40x lens).