

# CNTROB Rabbit Polyclonal Antibody



CAB8277

---

## Product Information

### Size:

20uL, 50uL, 100uL, 200uL

### Observed MW:

101kDa

### Calculated MW:

63kDa/97kDa/101kDa/103kDa

a

### Applications:

WB

### Reactivity:

Human

## Antibody Information

### Recommended dilutions:

WB 1:500 - 1:2000

### Source:

Rabbit

### Isotype:

IgG

### Purification:

Affinity purification

## Protein Background

This gene encodes a centrosomal protein that interacts with BRCA2, and is required for centriole duplication and cytokinesis. Alternatively spliced transcript variants encoding different isoforms have been described for this gene.

## Immunogen information

### Gene ID:

116840

### Uniprot

Q8N137

### Synonyms:

CNTROB; LIP8; PP1221; centrobin

### Immunogen:

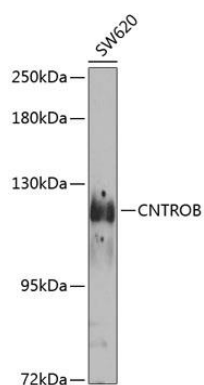
Recombinant fusion protein containing a sequence corresponding to amino acids 604-903 of human CNTROB (NP\_444279.2).

### Storage:

Store at -20°C. Avoid freeze / thaw cycles. Buffer: PBS with 0.02% sodium azide, 50% glycerol, pH7.3.

## Product Images

---



Western blot analysis of extracts of SW620 cells, using CNTROB antibody (CAB8277) at 1:1000 dilution. Secondary antibody: HRP Goat Anti-Rabbit IgG (H+L) (CABS014) at 1:10000 dilution. Lysates/proteins: 25ug per lane. Blocking buffer: 3% nonfat dry milk in TBST. Detection: ECL Basic Kit (CABM00020). Exposure time: 90s.