

LLGL2 Rabbit Polyclonal Antibody



CAB8284

Product Information

Size:

20uL, 50uL, 100uL, 200uL

Observed MW:

113kDa

Calculated MW:

114kDa

Applications:

WB IHC IF

Reactivity:

Human, Mouse, Rat

Antibody Information

Recommended dilutions:

WB 1:500 - 1:2000 IHC 1:50
- 1:200 IF 1:50 - 1:200

Source:

Rabbit

Isotype:

IgG

Purification:

Affinity purification

Protein Background

The lethal (2) giant larvae protein of *Drosophila* plays a role in asymmetric cell division, epithelial cell polarity, and cell migration. This human gene encodes a protein similar to lethal (2) giant larvae of *Drosophila*. In fly, the protein's ability to localize cell fate determinants is regulated by the atypical protein kinase C (aPKC). In human, this protein interacts with aPKC-containing complexes and is cortically localized in mitotic cells. Alternative splicing results in multiple transcript variants encoding different isoforms.

Immunogen information

Gene ID:

217325

Uniprot

Synonyms:

LLGL2; HGL; Hugl-2; LGL2

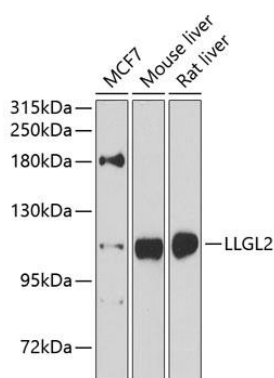
Immunogen:

Recombinant fusion protein containing a sequence corresponding to amino acids 620-819 of mouse LLGL2 (NP_663413.2).

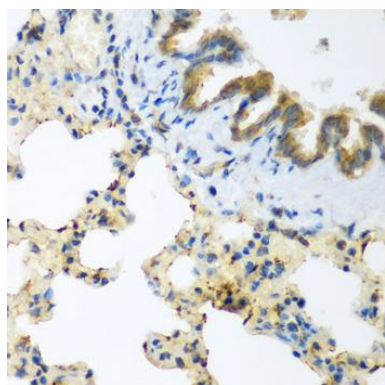
Storage:

Store at -20°C. Avoid freeze / thaw cycles. Buffer: PBS with 0.02% sodium azide, 50% glycerol, pH7.3.

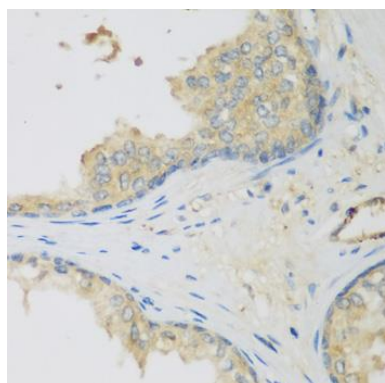
Product Images



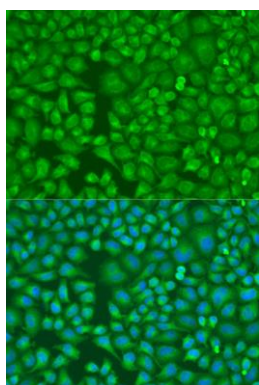
Western blot analysis of extracts of various cell lines, using LLGL2 antibody (CAB8284) at 1:1000 dilution. Secondary antibody: HRP Goat Anti-Rabbit IgG (H+L) (CABS014) at 1:10000 dilution. Lysates/proteins: 25ug per lane. Blocking buffer: 3% nonfat dry milk in TBST. Detection: ECL Enhanced Kit (CABM00021). Exposure time: 5s.



Immunohistochemistry of paraffin-embedded rat lung using LLGL2 antibody (CAB8284) at dilution of 1:200 (40x lens).



Immunohistochemistry of paraffin-embedded human prostate using LLGL2 antibody (CAB8284) at dilution of 1:200 (40x lens).



Immunofluorescence analysis of U2OS cells using LLGL2 antibody (CAB8284) at dilution of 1:100. Blue: DAPI for nuclear staining.