

HYLS1 Rabbit Polyclonal Antibody



CAB8285

Product Information

Size:

20uL, 50uL, 100uL, 200uL

Observed MW:

37kDa

Calculated MW:

34kDa

Applications:

WB IF

Reactivity:

Human

Protein Background

This gene encodes a protein localized to the cytoplasm. Mutations in this gene are associated with hydrolethalus syndrome. Multiple alternatively spliced variants, encoding the same protein, have been identified.

Immunogen information

Gene ID:

219844

Uniprot

Q96M11

Synonyms:

HYLS1; HLS

Antibody Information

Recommended dilutions:

WB 1:500 - 1:2000 IF 1:50 - 1:200

Source:

Rabbit

Isotype:

IgG

Purification:

Affinity purification

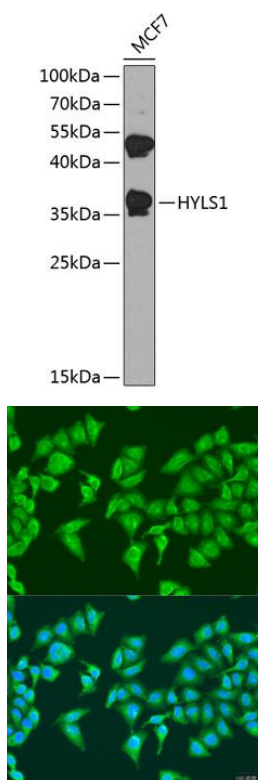
Immunogen:

Recombinant fusion protein containing a sequence corresponding to amino acids 70-299 of human HYLS1 (NP_659451.1).

Storage:

Store at -20°C. Avoid freeze / thaw cycles. Buffer: PBS with 0.02% sodium azide, 50% glycerol, pH7.3.

Product Images



Western blot analysis of extracts of MCF-7 cells, using HYLS1 antibody (CAB8285) at 1:1000 dilution. Secondary antibody: HRP Goat Anti-Rabbit IgG (H+L) (CABS014) at 1:10000 dilution. Lysates/proteins: 25ug per lane. Blocking buffer: 3% nonfat dry milk in TBST. Detection: ECL Basic Kit (CABM00020). Exposure time: 90s.

Immunofluorescence analysis of U2OS cells using HYLS1 antibody (CAB8285) at dilution of 1:100. Blue: DAPI for nuclear staining.