

MRC1 Rabbit Polyclonal Antibody



CAB8301

Product Information

Size:

20uL, 50uL, 100uL, 200uL

Observed MW:

166kDa

Calculated MW:

56kDa/166kDa

Applications:

WB

Reactivity:

Human, Mouse, Rat

Antibody Information

Recommended dilutions:

WB 1:500 - 1:2000

Source:

Rabbit

Isotype:

IgG

Purification:

Affinity purification

Protein Background

The recognition of complex carbohydrate structures on glycoproteins is an important part of several biological processes, including cell-cell recognition, serum glycoprotein turnover, and neutralization of pathogens. The protein encoded by this gene is a type I membrane receptor that mediates the endocytosis of glycoproteins by macrophages. The protein has been shown to bind high-mannose structures on the surface of potentially pathogenic viruses, bacteria, and fungi so that they can be neutralized by phagocytic engulfment.

Immunogen information

Gene ID:

4360

Uniprot

P22897

Synonyms:

MRC1; CD206; CLEC13D; CLEC13DL; MMR; MRC1L1; bA541119.1; hMR

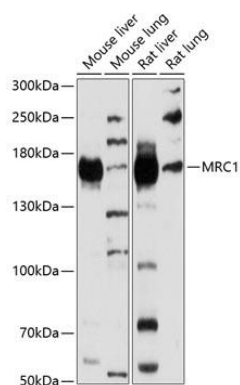
Immunogen:

Recombinant fusion protein containing a sequence corresponding to amino acids 610-860 of human MRC1 (NP_002429.1).

Storage:

Store at -20°C. Avoid freeze / thaw cycles. Buffer: PBS with 0.02% sodium azide, 50% glycerol, pH7.3.

Product Images



Western blot analysis of extracts of various cell lines, using MRC1 antibody (CAB8301) at 1:1000 dilution. Secondary antibody: HRP Goat Anti-Rabbit IgG (H+L) (CABS014) at 1:10000 dilution. Lysates/proteins: 25ug per lane. Blocking buffer: 3% nonfat dry milk in TBST. Detection: ECL Basic Kit (CABM00020). Exposure time: 5s.