

IL36G Rabbit Polyclonal Antibody



CAB8304

Product Information

Size:

20uL, 50uL, 100uL, 200uL

Observed MW:

Refer to figures

Calculated MW:

14kDa/18kDa

Applications:

WB IHC

Reactivity:

Human, Mouse, Rat

Antibody Information

Recommended dilutions:

WB 1:500 - 1:2000 IHC 1:50
- 1:100

Source:

Rabbit

Isotype:

IgG

Purification:

Affinity purification

Protein Background

The protein encoded by this gene is a member of the interleukin 1 cytokine family. The activity of this cytokine is mediated by interleukin 1 receptor-like 2 (IL1RL2/IL1R-rp2), and is specifically inhibited by interleukin 1 family, member 5 (IL1F5/IL-1 delta). Interferon-gamma, tumor necrosis factor-alpha and interleukin 1, beta (IL1B) are reported to stimulate the expression of this cytokine in keratinocytes. The expression of this cytokine in keratinocytes can also be induced by a contact hypersensitivity reaction or herpes simplex virus infection. This gene and eight other interleukin 1 family genes form a cytokine gene cluster on chromosome 2. Two alternatively spliced transcript variants encoding different isoforms have been found for this gene.

Immunogen information

Gene ID:

56300

Uniprot

Q9NZH8

Synonyms:

IL36G; IL-1F9; IL-1H1; IL-1RP2; IL1E; IL1F9; IL1H1; IL1RP2

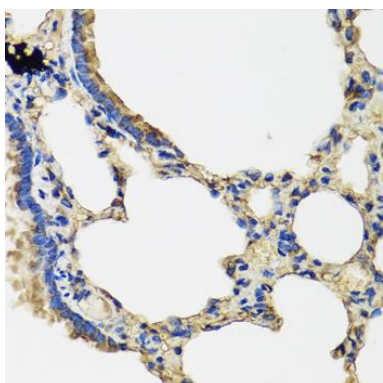
Immunogen:

Recombinant fusion protein containing a sequence corresponding to amino acids 1-169 of human IL36G (NP_062564.1).

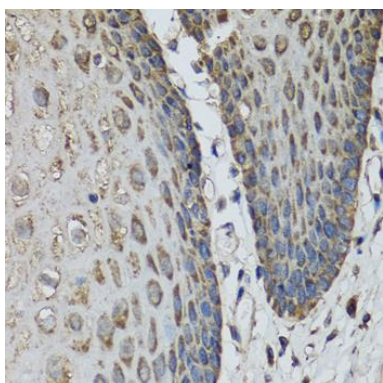
Storage:

Store at -20°C. Avoid freeze / thaw cycles. Buffer: PBS with 0.02% sodium azide, 50% glycerol, pH7.3.

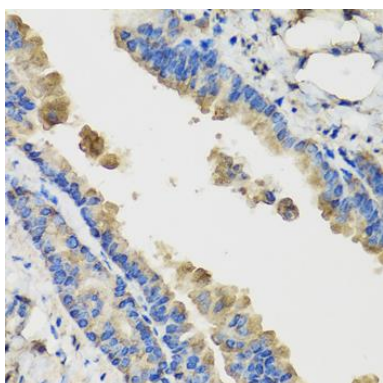
Product Images



Immunohistochemistry of paraffin-embedded rat lung using IL36G antibody (CAB8304) at dilution of 1:100 (40x lens).



Immunohistochemistry of paraffin-embedded human esophagus using IL36G antibody (CAB8304) at dilution of 1:100 (40x lens).



Immunohistochemistry of paraffin-embedded mouse lung using IL36G antibody (CAB8304) at dilution of 1:100 (40x lens).