

PTTG1 Rabbit Polyclonal Antibody



CAB8307

Product Information

Size:

20uL, 50uL, 100uL, 200uL

Observed MW:

24kDa

Calculated MW:

22kDa

Applications:

WB IHC

Reactivity:

Human, Mouse, Rat

Antibody Information

Recommended dilutions:

WB 1:500 - 1:2000 IHC

1:100 - 1:200

Source:

Rabbit

Isotype:

IgG

Purification:

Affinity purification

Protein Background

The encoded protein is a homolog of yeast securin proteins, which prevent separins from promoting sister chromatid separation. It is an anaphase-promoting complex (APC) substrate that associates with a separin until activation of the APC. The gene product has transforming activity in vitro and tumorigenic activity in vivo, and the gene is highly expressed in various tumors. The gene product contains 2 PXXP motifs, which are required for its transforming and tumorigenic activities, as well as for its stimulation of basic fibroblast growth factor expression. It also contains a destruction box (D box) that is required for its degradation by the APC. The acidic C-terminal region of the encoded protein can act as a transactivation domain. The gene product is mainly a cytosolic protein, although it partially localizes in the nucleus. Three transcript variants encoding the same protein have been found for this gene.

Immunogen information

Gene ID:

9232

Uniprot

O95997

Synonyms:

PTTG1; EAP1; HPTTG; PTTG; TUTR1; securin

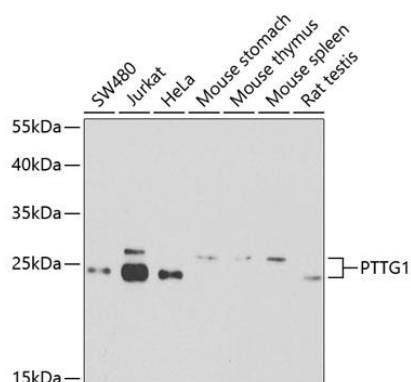
Immunogen:

Recombinant fusion protein containing a sequence corresponding to amino acids 1-202 of human PTTG1 (NP_001269311.1).

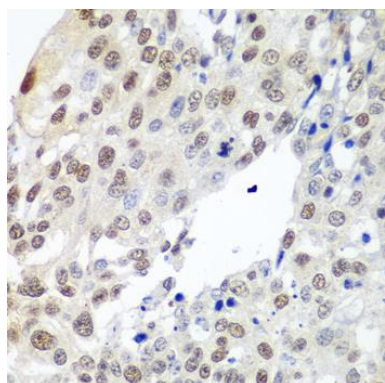
Storage:

Store at -20°C. Avoid freeze / thaw cycles. Buffer: PBS with 0.02% sodium azide, 50% glycerol, pH7.3.

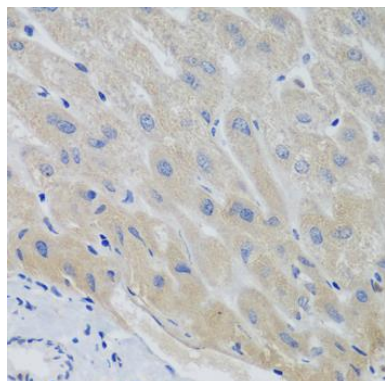
Product Images



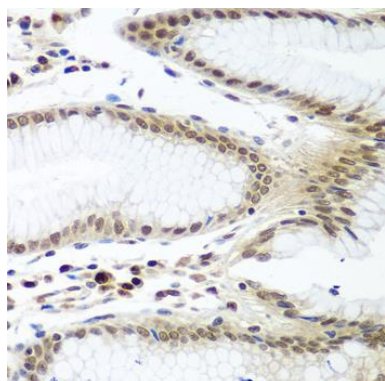
Western blot analysis of extracts of various cell lines, using PTTG1 antibody (CAB8307) at 1:1000 dilution. Secondary antibody: HRP Goat Anti-Rabbit IgG (H+L) (CABS014) at 1:10000 dilution. Lysates/proteins: 25ug per lane. Blocking buffer: 3% nonfat dry milk in TBST. Detection: ECL Basic Kit (CABM00020). Exposure time: 90s.



Immunohistochemistry of paraffin-embedded human lung cancer using PTTG1 antibody (CAB8307) at dilution of 1:100 (40x lens).



Immunohistochemistry of paraffin-embedded human liver using PTTG1 antibody (CAB8307) at dilution of 1:100 (40x lens).



Immunohistochemistry of paraffin-embedded human stomach using PTTG1 antibody (CAB8307) at dilution of 1:100 (40x lens).