

# TRH Rabbit Polyclonal Antibody



CAB8322

## Product Information

### Size:

20uL, 50uL, 100uL, 200uL

### Observed MW:

27kDa

### Calculated MW:

27kDa

### Applications:

WB IHC IF

### Reactivity:

Human, Mouse

## Protein Background

This gene encodes a member of the thyrotropin-releasing hormone family. Cleavage of the encoded proprotein releases mature thyrotropin-releasing hormone, which is a tripeptide hypothalamic regulatory hormone. The human proprotein contains six thyrotropin-releasing hormone tripeptides. Thyrotropin-releasing hormone is involved in the regulation and release of thyroid-stimulating hormone, as well as prolactin. Deficiency of this hormone has been associated with hypothalamic hypothyroidism.

## Immunogen information

### Gene ID:

7200

### Uniprot

P20396

### Synonyms:

TRH; Pro-TRH; TRF

## Antibody Information

### Recommended dilutions:

WB 1:500 - 1:2000 IHC 1:50  
- 1:100 IF 1:50 - 1:100

### Source:

Rabbit

### Isotype:

IgG

### Purification:

Affinity purification

### Immunogen:

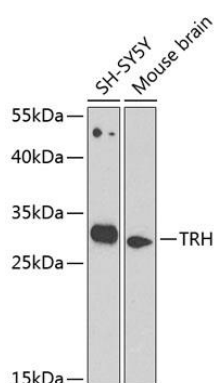
Recombinant fusion protein containing a sequence corresponding to amino acids 25-230 of human TRH (NP\_009048.1).

### Storage:

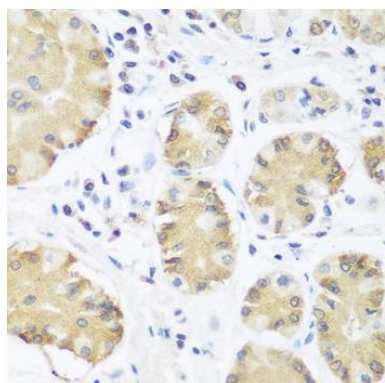
Store at -20°C. Avoid freeze / thaw cycles. Buffer: PBS with 0.02% sodium azide, 50% glycerol, pH7.3.

## Product Images

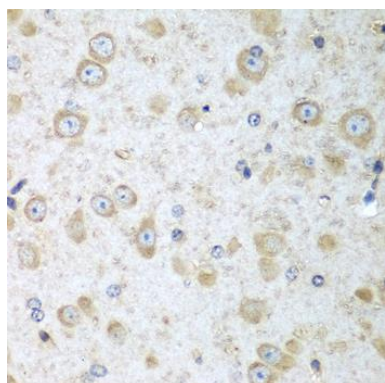
---



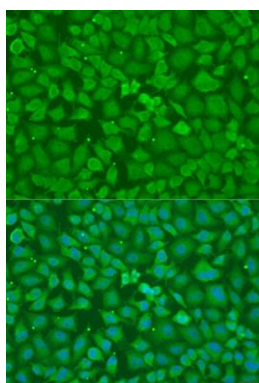
Western blot analysis of extracts of various cell lines, using TRH antibody (CAB8322) at 1:1000 dilution. Secondary antibody: HRP Goat Anti-Rabbit IgG (H+L) (CABS014) at 1:10000 dilution. Lysates/proteins: 25ug per lane. Blocking buffer: 3% nonfat dry milk in TBST. Detection: ECL Basic Kit (CABM00020). Exposure time: 90s.



Immunohistochemistry of paraffin-embedded human stomach using TRH antibody (CAB8322) at dilution of 1:100 (40x lens).



Immunohistochemistry of paraffin-embedded mouse brain using TRH antibody (CAB8322) at dilution of 1:100 (40x lens).



Immunofluorescence analysis of U2OS cells using TRH antibody (CAB8322) at dilution of 1:100. Blue: DAPI for nuclear staining.