

SLC9A9 Rabbit Polyclonal Antibody



CAB8323

Product Information

Size:

20uL, 50uL, 100uL, 200uL

Observed MW:

73kDa

Calculated MW:

72kDa

Applications:

WB

Reactivity:

Human, Mouse

Protein Background

This gene encodes a sodium/proton exchanger that is a member of the solute carrier 9 protein family. The encoded protein localizes to the late recycling endosomes and may play an important role in maintaining cation homeostasis. Mutations in this gene are associated with autism susceptibility 16 and attention-deficit/hyperactivity disorder.

Immunogen information

Gene ID:

285195

Uniprot

Q8IVB4

Synonyms:

SLC9A9; AUTS16; NHE9

Antibody Information

Recommended dilutions:

WB 1:500 - 1:2000

Source:

Rabbit

Isotype:

IgG

Purification:

Affinity purification

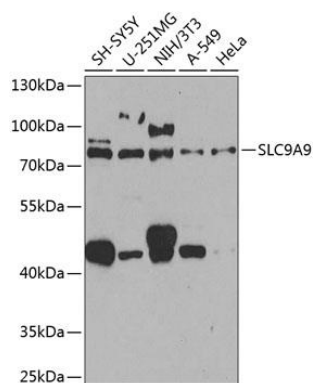
Immunogen:

Recombinant fusion protein containing a sequence corresponding to amino acids 1-130 of human SLC9A9 (NP_775924.1).

Storage:

Store at -20°C. Avoid freeze / thaw cycles. Buffer: PBS with 0.02% sodium azide, 50% glycerol, pH7.3.

Product Images



Western blot analysis of extracts of various cell lines, using SLC9A9 antibody (CAB8323) at 1:1000 dilution. Secondary antibody: HRP Goat Anti-Rabbit IgG (H+L) (CABS014) at 1:10000 dilution. Lysates/proteins: 25ug per lane. Blocking buffer: 3% nonfat dry milk in TBST. Detection: ECL Basic Kit (CABM00020). Exposure time: 90s.