

# cGAS Rabbit Polyclonal Antibody



CAB8335

## Product Information

### Size:

20uL, 50uL, 100uL, 200uL

### Observed MW:

59kDa

### Calculated MW:

49kDa/58kDa

### Applications:

WB IHC IF IP

### Reactivity:

Human, Mouse, Rat

## Antibody Information

### Recommended dilutions:

WB 1:500 - 1:2000 IHC 1:50  
- 1:200 IF 1:50 - 1:100 IP  
1:50 - 1:100

### Source:

Rabbit

### Isotype:

IgG

### Purification:

Affinity purification

## Protein Background

### Immunogen information

#### Gene ID:

115004

#### Uniprot

Q8N884

#### Synonyms:

MB21D1; C6orf150; cGAS; h-cGAS; CGAS

#### Immunogen:

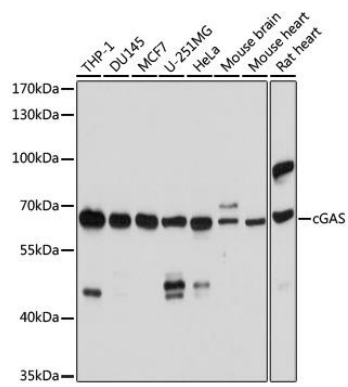
Recombinant fusion protein containing a sequence corresponding to amino acids 350-522 of human cGAS (NP\_612450.2).

#### Storage:

Store at -20°C. Avoid freeze / thaw cycles. Buffer: PBS with 0.02% sodium azide, 50% glycerol, pH7.3.

## Product Images

---



Western blot - cGAS Rabbit pAb (CAB8335)