

DROSHA Rabbit Polyclonal Antibody



CAB8336

Product Information

Size:

20uL, 50uL, 100uL, 200uL

Observed MW:

159kDa

Calculated MW:

138kDa/151kDa/155kDa/159kDa

Applications:

WB IF

Reactivity:

Human, Mouse

Protein Background

This gene encodes a ribonuclease (RNase) III double-stranded RNA-specific ribonuclease and subunit of the microprocessor protein complex, which catalyzes the initial processing step of microRNA (miRNA) synthesis. The encoded protein cleaves the stem loop structure from the primary microRNA (pri-miRNA) in the nucleus, yielding the precursor miRNA (pre-miRNA), which is then exported to the cytoplasm for further processing. In a human cell line lacking a functional copy of this gene, canonical miRNA synthesis is reduced. Somatic mutations in this gene have been observed in human patients with kidney cancer.

Immunogen information

Gene ID:

29102

Uniprot

Q9NRR4

Synonyms:

DROSHA; ETOH12; HSA242976; RANSE3L; RN3; RNASE3L; RNASEN

Antibody Information

Recommended dilutions:

WB 1:500 - 1:2000 IF 1:50 - 1:200

Source:

Rabbit

Isotype:

IgG

Purification:

Affinity purification

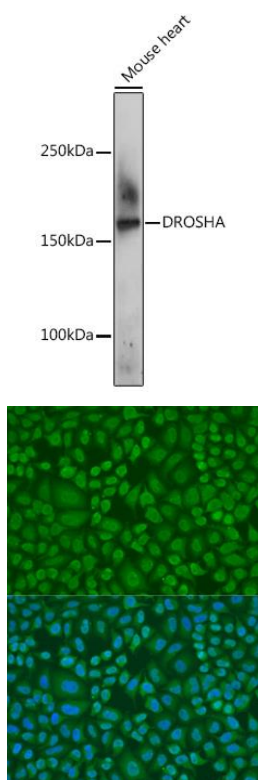
Immunogen:

A synthetic peptide corresponding to a sequence within amino acids 1-100 of human DROSHA (NP_037367.3).

Storage:

Store at -20°C. Avoid freeze / thaw cycles. Buffer: PBS with 0.02% sodium azide, 50% glycerol, pH7.3.

Product Images



Western blot analysis of extracts of Mouse heart, using DROSHA Rabbit pAb (CAB8336) at 1:500 dilution. Secondary antibody: HRP Goat Anti-Rabbit IgG (H+L) (CABS014) at 1:10000 dilution. Lysates/proteins: 25ug per lane. Blocking buffer: 3% nonfat dry milk in TBST. Detection: ECL Basic Kit (CABM00020). Exposure time: 180s.

Immunofluorescence analysis of U2OS cells using DROSHA antibody (CAB8336) at dilution of 1:100. Blue: DAPI for nuclear staining.