

# POFUT1 Rabbit Polyclonal Antibody



CAB8338

## Product Information

### Size:

20uL, 50uL, 100uL, 200uL

### Observed MW:

44kDa

### Calculated MW:

22kDa/43kDa

### Applications:

WB IHC

### Reactivity:

Human, Mouse, Rat

## Protein Background

This gene encodes a member of the glycosyltransferase O-Fuc family. This enzyme adds O-fucose through an O-glycosidic linkage to conserved serine or threonine residues in the epidermal growth factor-like repeats of a number of cell surface and secreted proteins. O-fucose glycans are involved in ligand-induced receptor signaling. Alternative splicing of this gene results in two transcript variants encoding different isoforms.

## Immunogen information

### Gene ID:

23509

### Uniprot

Q9H488

### Synonyms:

POFUT1; DDD2; FUT12; O-FUT; O-Fuc-T; O-FucT-1; OFUCT1

## Antibody Information

### Recommended dilutions:

WB 1:500 - 1:2000 IHC

1:100 - 1:200

### Source:

Rabbit

### Isotype:

IgG

### Purification:

Affinity purification

### Immunogen:

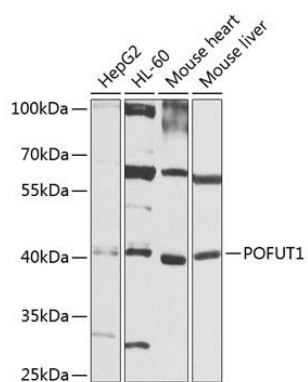
Recombinant fusion protein containing a sequence corresponding to amino acids 28-194 of human POFUT1 (NP\_758436.1).

### Storage:

Store at -20°C. Avoid freeze / thaw cycles. Buffer: PBS with 0.02% sodium azide, 50% glycerol, pH7.3.

## Product Images

---



Western blot analysis of extracts of various cell lines, using POFUT1 antibody (CAB8338) at 1:1000 dilution. Secondary antibody: HRP Goat Anti-Rabbit IgG (H+L) (CABS014) at 1:10000 dilution. Lysates/proteins: 25ug per lane. Blocking buffer: 3% nonfat dry milk in TBST. Detection: ECL Basic Kit (CABM00020). Exposure time: 5s.