

# GRPEL2 Rabbit Polyclonal Antibody



CAB8339

---

## Product Information

### Size:

20uL, 50uL, 100uL, 200uL

### Observed MW:

20kDa

### Calculated MW:

14kDa/25kDa

### Applications:

WB IHC

### Reactivity:

Human, Mouse, Rat

## Antibody Information

### Recommended dilutions:

WB 1:500 - 1:2000 IHC 1:50  
- 1:100

### Source:

Rabbit

### Isotype:

IgG

### Purification:

Affinity purification

## Protein Background

### Immunogen information

#### Gene ID:

134266

#### Uniprot

Q8TAA5

#### Synonyms:

GRPEL2; Mt-GrpE#2; GrpE like 2

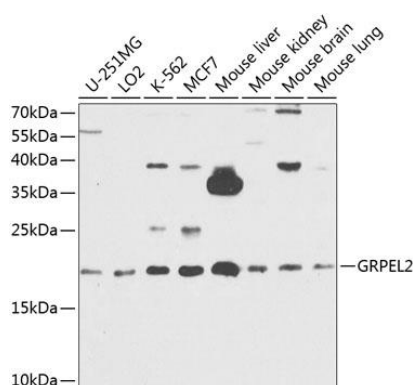
#### Immunogen:

Recombinant fusion protein containing a sequence corresponding to amino acids 33-225 of human GRPEL2 (NP\_689620.2).

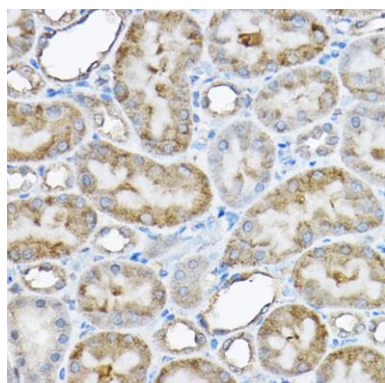
#### Storage:

Store at -20°C. Avoid freeze / thaw cycles. Buffer: PBS with 0.02% sodium azide, 50% glycerol, pH7.3.

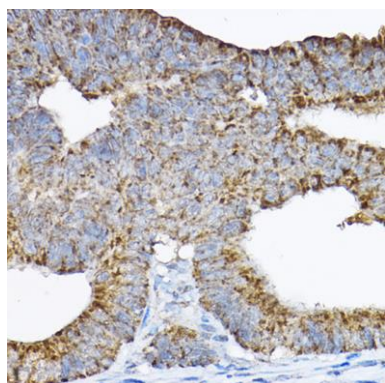
## Product Images



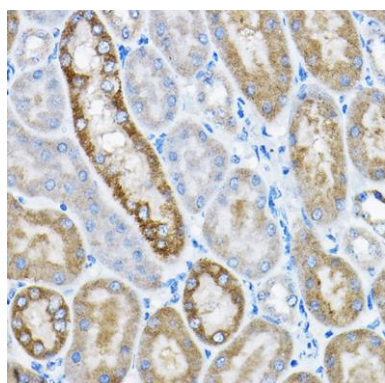
Western blot analysis of extracts of various cell lines, using GRPEL2 antibody (CAB8339) at 1:1000 dilution. Secondary antibody: HRP Goat Anti-Rabbit IgG (H+L) (CABS014) at 1:10000 dilution. Lysates/proteins: 25ug per lane. Blocking buffer: 3% nonfat dry milk in TBST. Detection: ECL Basic Kit (CABM00020). Exposure time: 90s.



Immunohistochemistry of paraffin-embedded rat kidney using GRPEL2 Rabbit pAb (CAB8339) at dilution of 1:200 (40x lens).



Immunohistochemistry of paraffin-embedded human colon carcinoma using GRPEL2 Rabbit pAb (CAB8339) at dilution of 1:200 (40x lens).



Immunohistochemistry of paraffin-embedded mouse kidney using GRPEL2 Rabbit pAb (CAB8339) at dilution of 1:200 (40x lens).