

# CAD Rabbit Polyclonal Antibody



CAB8344

## Product Information

### Size:

20uL, 50uL, 100uL, 200uL

### Observed MW:

243kDa

### Calculated MW:

242kDa

### Applications:

WB IHC IF

### Reactivity:

Human, Mouse, Rat

## Protein Background

The de novo synthesis of pyrimidine nucleotides is required for mammalian cells to proliferate. This gene encodes a trifunctional protein which is associated with the enzymatic activities of the first 3 enzymes in the 6-step pathway of pyrimidine biosynthesis: carbamoylphosphate synthetase (CPS II), aspartate transcarbamoylase, and dihydroorotase. This protein is regulated by the mitogen-activated protein kinase (MAPK) cascade, which indicates a direct link between activation of the MAPK cascade and de novo biosynthesis of pyrimidine nucleotides. Alternative splicing results in multiple transcript variants encoding different isoforms.

## Immunogen information

### Gene ID:

790

### Uniprot

P27708

### Synonyms:

CAD; CDG1Z; EIEE50; GATD4

## Antibody Information

### Recommended dilutions:

WB 1:500 - 1:2000 IHC 1:50  
- 1:100 IF 1:50 - 1:200

### Source:

Rabbit

### Isotype:

IgG

### Purification:

Affinity purification

### Immunogen:

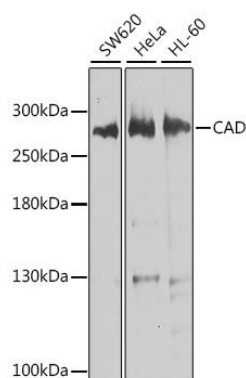
Recombinant fusion protein containing a sequence corresponding to amino acids 1650-1900 of human CAD (NP\_004332.2).

### Storage:

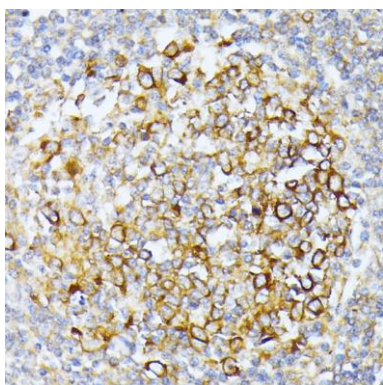
Store at -20°C. Avoid freeze / thaw cycles. Buffer: PBS with 0.02% sodium azide, 50% glycerol, pH7.3.

## Product Images

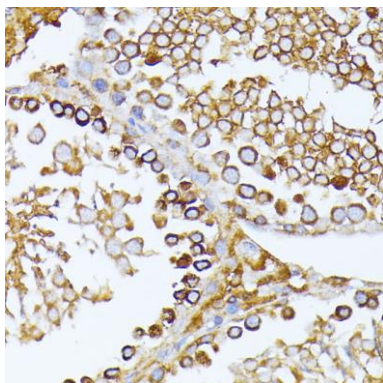
---



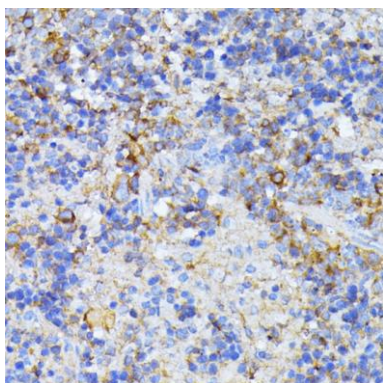
Western blot analysis of extracts of various cell lines, using CAD antibody (CAB8344) at 1:1000 dilution. Secondary antibody: HRP Goat Anti-Rabbit IgG (H+L) (CABS014) at 1:10000 dilution. Lysates/proteins: 25ug per lane. Blocking buffer: 3% nonfat dry milk in TBST. Detection: ECL Basic Kit (CABM00020). Exposure time: 10s.



Immunohistochemistry of paraffin-embedded human tonsil using CAD antibody (CAB8344) at dilution of 1:100 (40x lens).



Immunohistochemistry of paraffin-embedded rat testis using CAD antibody (CAB8344) at dilution of 1:100 (40x lens).



Immunohistochemistry of paraffin-embedded mouse spleen using CAD antibody (CAB8344) at dilution of 1:100 (40x lens).