

# KPNA3 Rabbit Polyclonal Antibody



CAB8347

## Product Information

### Size:

20uL, 50uL, 100uL, 200uL

### Observed MW:

55kDa

### Calculated MW:

57kDa

### Applications:

WB IHC

### Reactivity:

Human, Mouse, Rat

## Protein Background

The transport of molecules between the nucleus and the cytoplasm in eukaryotic cells is mediated by the nuclear pore complex (NPC), which consists of 60-100 proteins. Small molecules (up to 70 kD) can pass through the nuclear pore by nonselective diffusion while larger molecules are transported by an active process. The protein encoded by this gene belongs to the importin alpha family, and is involved in nuclear protein import.

## Immunogen information

### Gene ID:

3839

### Uniprot

O00505

### Synonyms:

KPNA3; IPOA4; SRP1; SRP1gamma; SRP4; hSRP1

## Antibody Information

### Recommended dilutions:

WB 1:500 - 1:2000 IHC 1:50  
- 1:100

### Source:

Rabbit

### Isotype:

IgG

### Purification:

Affinity purification

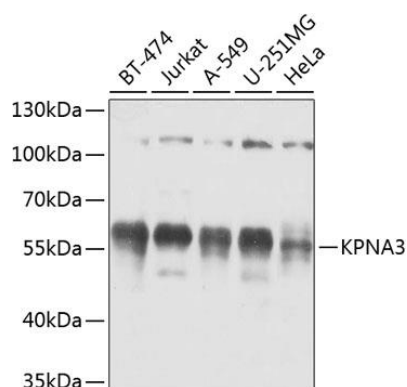
### Immunogen:

Recombinant fusion protein containing a sequence corresponding to amino acids 1-210 of human KPNA3 (NP\_002258.2).

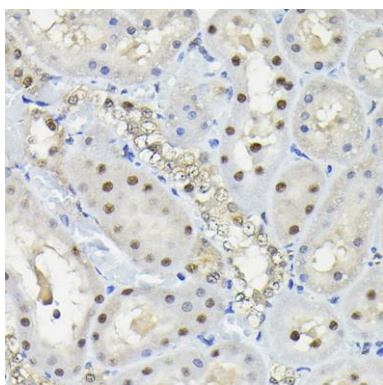
### Storage:

Store at -20°C. Avoid freeze / thaw cycles. Buffer: PBS with 0.02% sodium azide, 50% glycerol, pH7.3.

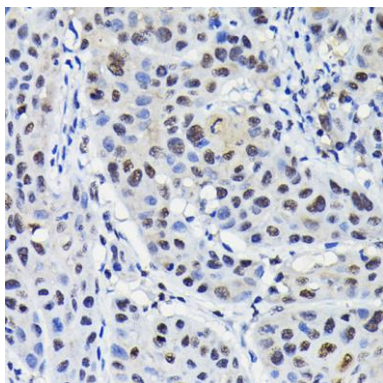
## Product Images



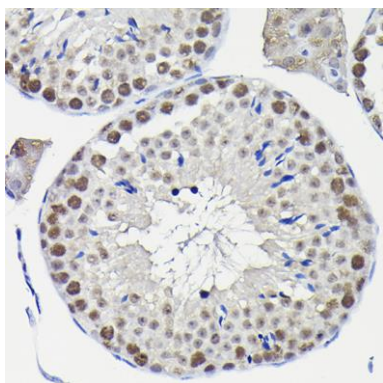
Western blot analysis of extracts of various cell lines, using KPNA3 antibody (CAB8347) at 1:1000 dilution. Secondary antibody: HRP Goat Anti-Rabbit IgG (H+L) (CABS014) at 1:10000 dilution. Lysates/proteins: 25ug per lane. Blocking buffer: 3% nonfat dry milk in TBST. Detection: ECL Basic Kit (CABM00020). Exposure time: 5s.



Immunohistochemistry of paraffin-embedded rat kidney using KPNA3 Rabbit pAb (CAB8347) at dilution of 1:100 (40x lens).



Immunohistochemistry of paraffin-embedded human esophageal cancer using KPNA3 Rabbit pAb (CAB8347) at dilution of 1:100 (40x lens).



Immunohistochemistry of paraffin-embedded mouse testis using KPNA3 Rabbit pAb (CAB8347) at dilution of 1:100 (40x lens).