

NID1 Rabbit Polyclonal Antibody



CAB8349

Product Information

Size:

20uL, 50uL, 100uL, 200uL

Observed MW:

178kDa

Calculated MW:

122kDa/136kDa

Applications:

WB IHC

Reactivity:

Human

Protein Background

This gene encodes a member of the nidogen family of basement membrane glycoproteins. The protein interacts with several other components of basement membranes, and may play a role in cell interactions with the extracellular matrix.

Immunogen information

Gene ID:

4811

Uniprot

P14543

Synonyms:

NID1; NID; nidogen-1

Antibody Information

Recommended dilutions:

WB 1:500 - 1:2000 IHC 1:50
- 1:100

Source:

Rabbit

Isotype:

IgG

Purification:

Affinity purification

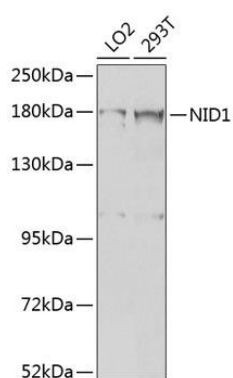
Immunogen:

Recombinant fusion protein containing a sequence corresponding to amino acids 110-400 of human NID1 (NP_002499.2).

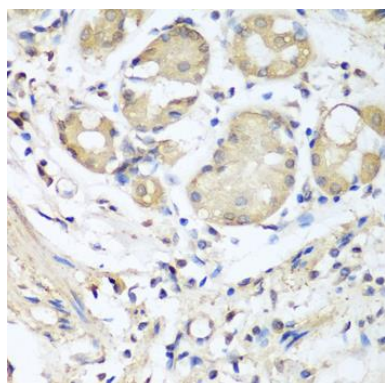
Storage:

Store at -20°C. Avoid freeze / thaw cycles. Buffer: PBS with 0.02% sodium azide, 50% glycerol, pH7.3.

Product Images



Western blot analysis of extracts of various cell lines, using NID1 antibody (CAB8349) at 1:1000 dilution. Secondary antibody: HRP Goat Anti-Rabbit IgG (H+L) (CABS014) at 1:10000 dilution. Lysates/proteins: 25ug per lane. Blocking buffer: 3% nonfat dry milk in TBST. Detection: ECL Basic Kit (CABM00020). Exposure time: 5s.



Immunohistochemistry of paraffin-embedded human stomach using NID1 antibody (CAB8349) at dilution of 1:100 (40x lens).