

RNF5 Rabbit Polyclonal Antibody



CAB8351

Product Information

Size:

20uL, 50uL, 100uL, 200uL

Observed MW:

21kDa

Calculated MW:

19kDa

Applications:

WB IHC IF

Reactivity:

Human, Mouse, Rat

Protein Background

The protein encoded by this gene contains a RING finger, which is a motif known to be involved in protein-protein interactions. This protein is a membrane-bound ubiquitin ligase. It can regulate cell motility by targeting paxillin ubiquitination and altering the distribution and localization of paxillin in cytoplasm and cell focal adhesions.

Immunogen information

Gene ID:

6048

Uniprot

Q99942

Synonyms:

RNF5; RING5; RMA1

Antibody Information

Recommended dilutions:

WB 1:500 - 1:2000 IHC 1:50
- 1:200 IF 1:50 - 1:100

Source:

Rabbit

Isotype:

IgG

Purification:

Affinity purification

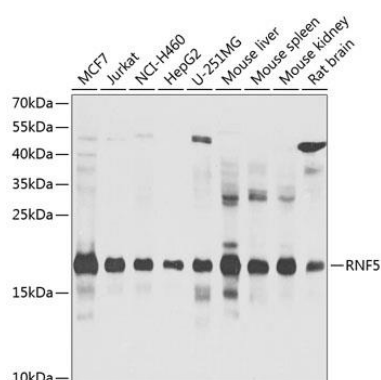
Immunogen:

Recombinant fusion protein containing a sequence corresponding to amino acids 1-120 of human RNF5 (NP_008844.1).

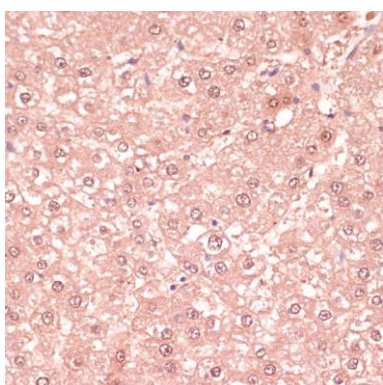
Storage:

Store at -20°C. Avoid freeze / thaw cycles. Buffer: PBS with 0.02% sodium azide, 50% glycerol, pH7.3.

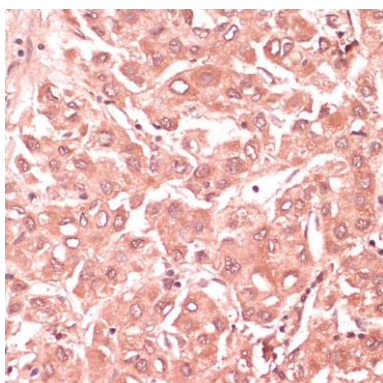
Product Images



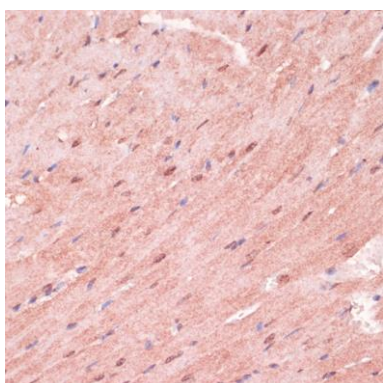
Western blot analysis of extracts of various cell lines, using RNF5 antibody (CAB8351) at 1:1000 dilution. Secondary antibody: HRP Goat Anti-Rabbit IgG (H+L) (CABS014) at 1:10000 dilution. Lysates/proteins: 25ug per lane. Blocking buffer: 3% nonfat dry milk in TBST. Detection: ECL Basic Kit (CABM00020). Exposure time: 30s.



Immunohistochemistry of paraffin-embedded rat liver using RNF5 antibody (CAB8351) at dilution of 1:100 (40x lens).



Immunohistochemistry of paraffin-embedded human liver cancer using RNF5 antibody (CAB8351) at dilution of 1:100 (40x lens).



Immunohistochemistry of paraffin-embedded mouse heart using RNF5 antibody (CAB8351) at dilution of 1:100 (40x lens).