

HLTF Rabbit Polyclonal Antibody



CAB8353

Product Information

Size:

20uL, 50uL, 100uL, 200uL

Observed MW:

114kDa

Calculated MW:

99kDa/113kDa

Applications:

WB

Reactivity:

Human

Protein Background

This gene encodes a member of the SWI/SNF family. Members of this family have helicase and ATPase activities and are thought to regulate transcription of certain genes by altering the chromatin structure around those genes. The encoded protein contains a RING finger DNA binding motif. Two transcript variants encoding the same protein have been found for this gene. However, use of an alternative translation start site produces an isoform that is truncated at the N-terminus compared to the full-length protein.

Immunogen information

Gene ID:

6596

Uniprot

Q14527

Synonyms:

HLTF; HIP116; HIP116A; HLTF1; RNF80; SMARCA3; SNF2L3; ZBU1

Antibody Information

Recommended dilutions:

WB 1:500 - 1:2000

Source:

Rabbit

Isotype:

IgG

Purification:

Affinity purification

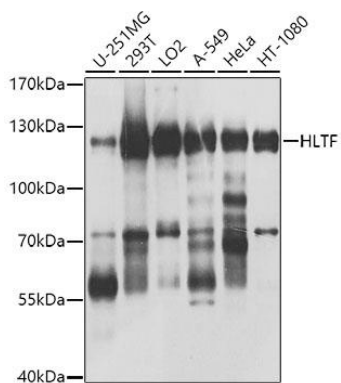
Immunogen:

Recombinant fusion protein containing a sequence corresponding to amino acids 726-1009 of human HLTF (NP_620636.1).

Storage:

Store at -20°C. Avoid freeze / thaw cycles. Buffer: PBS with 0.02% sodium azide, 50% glycerol, pH7.3.

Product Images



Western blot analysis of extracts of various cell lines, using HLTf antibody (CAB8353) at 1:1000 dilution. Secondary antibody: HRP Goat Anti-Rabbit IgG (H+L) (CABS014) at 1:10000 dilution. Lysates/proteins: 25ug per lane. Blocking buffer: 3% nonfat dry milk in TBST. Detection: ECL Basic Kit (CABM00020). Exposure time: 5s.