

# XPC Rabbit Polyclonal Antibody



CAB8354

## Product Information

### Size:

20uL, 50uL, 100uL, 200uL

### Observed MW:

130kDa

### Calculated MW:

15kDa/101kDa/105kDa

### Applications:

WB IHC IP

### Reactivity:

Human

## Antibody Information

### Recommended dilutions:

WB 1:500 - 1:2000 IHC 1:50  
- 1:100 IP 1:50 - 1:100

### Source:

Rabbit

### Isotype:

IgG

### Purification:

Affinity purification

## Protein Background

This gene encodes a component of the nucleotide excision repair (NER) pathway. There are multiple components involved in the NER pathway, including Xeroderma pigmentosum (XP) A-G and V, Cockayne syndrome (CS) A and B, and trichothiodystrophy (TTD) group A, etc. This component, XPC, plays an important role in the early steps of global genome NER, especially in damage recognition, open complex formation, and repair protein complex formation. Mutations in this gene or some other NER components result in Xeroderma pigmentosum, a rare autosomal recessive disorder characterized by increased sensitivity to sunlight with the development of carcinomas at an early age. Alternatively spliced transcript variants have been found for this gene.

## Immunogen information

### Gene ID:

7508

### Uniprot

Q01831

### Synonyms:

XPC; RAD4; XP3; XPCC; p125

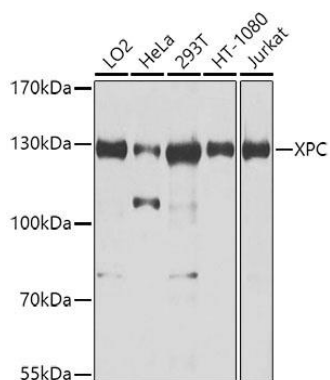
### Immunogen:

Recombinant fusion protein containing a sequence corresponding to amino acids 700-940 of human XPC (NP\_004619.3).

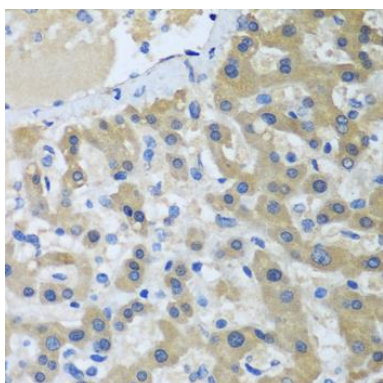
### Storage:

Store at -20°C. Avoid freeze / thaw cycles. Buffer: PBS with 0.02% sodium azide, 50% glycerol, pH7.3.

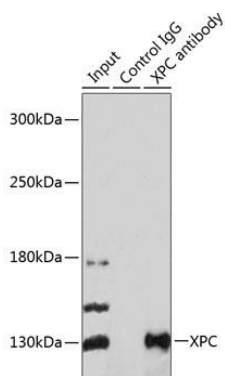
## Product Images



Western blot analysis of extracts of various cell lines, using XPC antibody (CAB8354) at 1:1000 dilution. Secondary antibody: HRP Goat Anti-Rabbit IgG (H+L) (CABS014) at 1:10000 dilution. Lysates/proteins: 25ug per lane. Blocking buffer: 3% nonfat dry milk in TBST. Detection: ECL Enhanced Kit (CABM00021). Exposure time: 5s.



Immunohistochemistry of paraffin-embedded human liver cancer using XPC antibody (CAB8354) at dilution of 1:100 (40x lens).



Immunoprecipitation analysis of 200ug extracts of 293T cells using 3ug XPC antibody (A8354). Western blot was performed from the immunoprecipitate using XPC antibody (A8354) at a dilution of 1:1000.