

PPP4R1 Rabbit Polyclonal Antibody



CAB8361

Product Information

Size:

20uL, 50uL, 100uL, 200uL

Observed MW:

130kDa

Calculated MW:

105kDa/107kDa

Applications:

WB IHC IP

Reactivity:

Human, Mouse

Protein Background

This gene encodes one of several alternate regulatory subunits of serine/threonine protein phosphatase 4 (PP4). The protein features multiple HEAT repeats. This protein forms a complex with PP4RC. This complex may have a distinct role from other PP4 complexes, including regulation of HDAC3 (Zhang et al., PMID: 15805470). There is also a transcribed pseudogene on chromosome 20. Alternative splicing results in multiple transcript variants.

Immunogen information

Gene ID:

9989

Uniprot

Q8TF05

Synonyms:

PPP4R1; MEG1; PP4(Rmeg); PP4R1

Antibody Information

Recommended dilutions:

WB 1:500 - 1:2000 IHC 1:50
- 1:100 IP 1:50 - 1:100

Source:

Rabbit

Isotype:

IgG

Purification:

Affinity purification

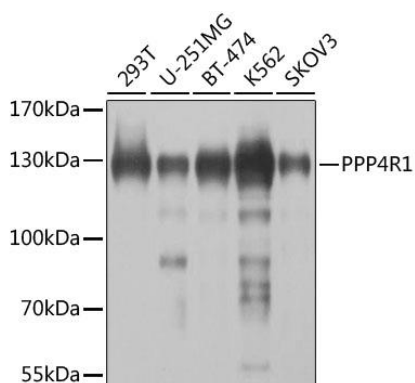
Immunogen:

Recombinant fusion protein containing a sequence corresponding to amino acids 324-647 of human PPP4R1 (NP_001035847.1).

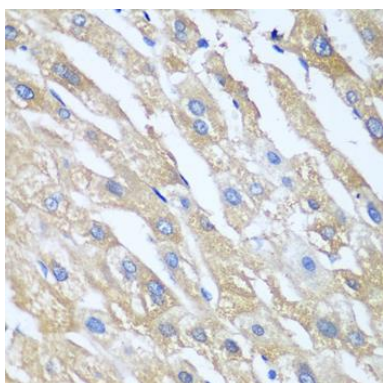
Storage:

Store at -20°C. Avoid freeze / thaw cycles. Buffer: PBS with 0.02% sodium azide, 50% glycerol, pH7.3.

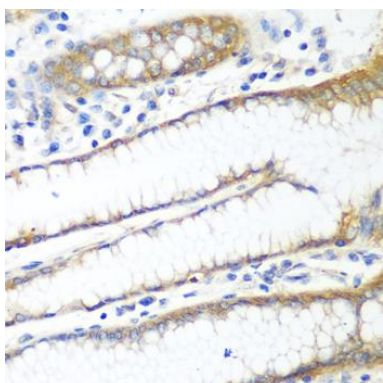
Product Images



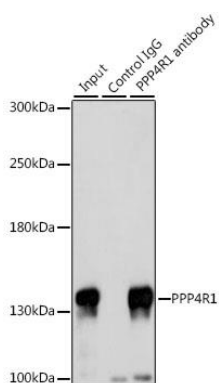
Western blot analysis of extracts of various cell lines, using PPP4R1 antibody (CAB8361) at 1:1000 dilution. Secondary antibody: HRP Goat Anti-Rabbit IgG (H+L) (CABS014) at 1:10000 dilution. Lysates/proteins: 25ug per lane. Blocking buffer: 3% nonfat dry milk in TBST. Detection: ECL Basic Kit (CABM00020). Exposure time: 5s.



Immunohistochemistry of paraffin-embedded human liver using PPP4R1 antibody (CAB8361) at dilution of 1:100 (40x lens).



Immunohistochemistry of paraffin-embedded human stomach using PPP4R1 antibody (CAB8361) at dilution of 1:100 (40x lens).



Immunoprecipitation analysis of 200ug extracts of 293T cells, using 3 ug PPP4R1 antibody (CAB8361). Western blot was performed from the immunoprecipitate using PPP4R1 antibody (CAB8361) at a dilution of 1:1000.