

PITRM1 Rabbit Polyclonal Antibody



CAB8362

Product Information

Size:

20uL, 50uL, 100uL, 200uL

Observed MW:

117kDa

Calculated MW:

106kDa/117kDa

Applications:

WB IHC IF

Reactivity:

Human, Mouse, Rat

Protein Background

The protein encoded by this gene is an ATP-dependent metalloprotease that degrades post-cleavage mitochondrial transit peptides. The encoded protein binds zinc and can also degrade amyloid beta A4 protein, suggesting a possible role in Alzheimer's disease.

Immunogen information

Gene ID:

10531

Uniprot

Q5JRX3

Synonyms:

PITRM1; MP1; PreP

Antibody Information

Recommended dilutions:

WB 1:500 - 1:2000 IHC 1:50
- 1:100 IF 1:50 - 1:200

Source:

Rabbit

Isotype:

IgG

Purification:

Affinity purification

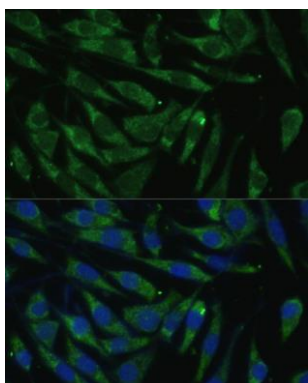
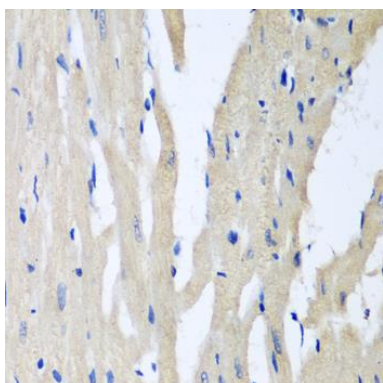
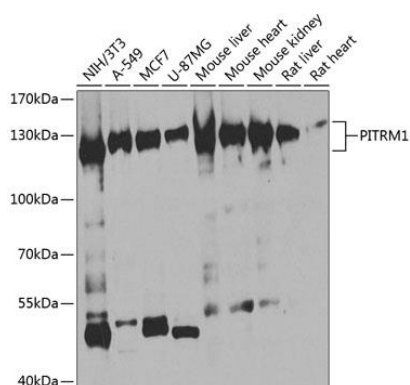
Immunogen:

Recombinant fusion protein containing a sequence corresponding to amino acids 758-1037 of human PITRM1 (NP_055704.2).

Storage:

Store at -20°C. Avoid freeze / thaw cycles. Buffer: PBS with 0.02% sodium azide, 50% glycerol, pH7.3.

Product Images



Western blot analysis of extracts of various cell lines, using PITRM1 antibody (CAB8362) at 1:1000 dilution. Secondary antibody: HRP Goat Anti-Rabbit IgG (H+L) (CABS014) at 1:10000 dilution. Lysates/proteins: 25ug per lane. Blocking buffer: 3% nonfat dry milk in TBST. Detection: ECL Basic Kit (CABM00020). Exposure time: 30s.

Immunohistochemistry of paraffin-embedded rat heart using PITRM1 antibody (CAB8362) at dilution of 1:100 (40x lens).

Immunofluorescence analysis of L929 cells using PITRM1 Polyclonal Antibody (CAB8362) at dilution of 1:100 (40x lens). Blue: DAPI for nuclear staining.