

RNF13 Rabbit Polyclonal Antibody



CAB8363

Product Information

Size:

20uL, 50uL, 100uL, 200uL

Observed MW:

47kDa

Calculated MW:

29kDa/42kDa

Applications:

WB

Reactivity:

Mouse

Protein Background

The protein encoded by this gene contains a RING zinc finger, a motif known to be involved in protein-protein interactions. The specific function of this gene has not yet been determined. Alternatively spliced transcript variants that encode the same protein have been reported. A pseudogene, which is also located on chromosome 3, has been defined for this gene.

Immunogen information

Gene ID:

11342

Uniprot

O43567

Synonyms:

RNF13; RZF

Antibody Information

Recommended dilutions:

WB 1:500 - 1:2000

Source:

Rabbit

Isotype:

IgG

Purification:

Affinity purification

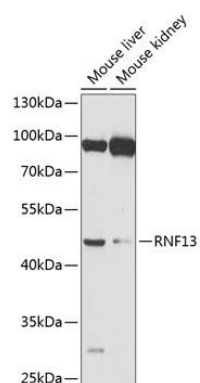
Immunogen:

Recombinant fusion protein containing a sequence corresponding to amino acids 204-381 of human RNF13 (NP_009213.1).

Storage:

Store at -20°C. Avoid freeze / thaw cycles. Buffer: PBS with 0.02% sodium azide, 50% glycerol, pH7.3.

Product Images



Western blot analysis of extracts of various cell lines, using RNF13 antibody (CAB8363) at 1:1000 dilution. Secondary antibody: HRP Goat Anti-Rabbit IgG (H+L) (CABS014) at 1:10000 dilution. Lysates/proteins: 25ug per lane. Blocking buffer: 3% nonfat dry milk in TBST. Detection: ECL Enhanced Kit (CABM00021). Exposure time: 10s.