

METTL3 Rabbit Polyclonal Antibody



CAB8370

Product Information

Size:

20uL, 50uL, 100uL, 200uL

Observed MW:

80kDa

Calculated MW:

25kDa/64kDa

Applications:

WB IHC IF IP

Reactivity:

Human, Mouse, Rat

Protein Background

This gene encodes the 70 kDa subunit of MT-A which is part of N6-adenosine-methyltransferase. This enzyme is involved in the posttranscriptional methylation of internal adenosine residues in eukaryotic mRNAs, forming N6-methyladenosine.

Immunogen information

Gene ID:

56339

Uniprot

Q86U44

Synonyms:

IME4; M6A; MT-A70; Spo8; hMETTL3; METTL3

Antibody Information

Recommended dilutions:

WB 1:500 - 1:2000 IHC 1:50
- 1:200 IF 1:50 - 1:200 IP
1:20 - 1:50

Source:

Rabbit

Isotype:

IgG

Purification:

Affinity purification

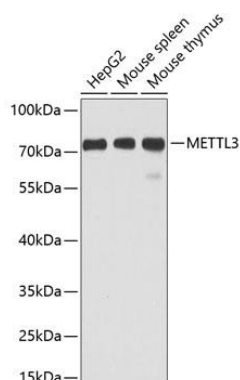
Immunogen:

Recombinant fusion protein containing a sequence corresponding to amino acids 1-156 of human METTL3 (NP_062826.2).

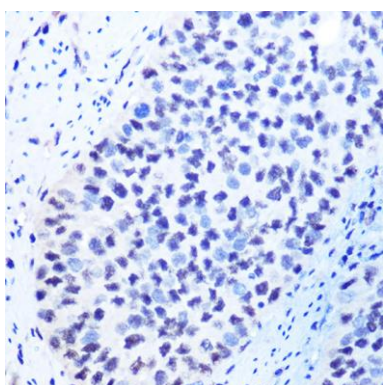
Storage:

Store at -20°C. Avoid freeze / thaw cycles. Buffer: PBS with 0.02% sodium azide, 50% glycerol, pH7.3.

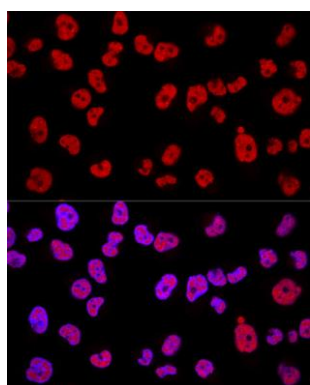
Product Images



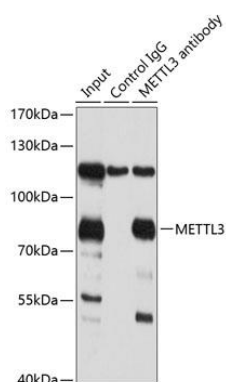
Western blot analysis of extracts of various cell lines, using METTL3 antibody (CAB8370) at 1:1000 dilution. Secondary antibody: HRP Goat Anti-Rabbit IgG (H+L) (CABS014) at 1:10000 dilution. Lysates/proteins: 25ug per lane. Blocking buffer: 3% nonfat dry milk in TBST. Detection: ECL Enhanced Kit (CABM00021). Exposure time: 1s.



Immunohistochemistry of paraffin-embedded human esophageal cancer using METTL3 Rabbit pAb (CAB8370) at dilution of 1:100 (40x lens).



Confocal immunofluorescence analysis of HeLa cells using METTL3 Polyclonal Antibody (CAB8370) at dilution of 1:200. Blue: DAPI for nuclear staining.



Immunoprecipitation analysis of 150ug extracts of 293T cells using 3ug METTL3 antibody (CAB8370). Western blot was performed from the immunoprecipitate using METTL3 antibody (CAB8370) at a dilution of 1:1000.