

PALB2 Rabbit Polyclonal Antibody



CAB8373

Product Information

Size:

20uL, 50uL, 100uL, 200uL

Observed MW:

150kDa

Calculated MW:

131kDa

Applications:

WB

Reactivity:

Human

Protein Background

This gene encodes a protein that may function in tumor suppression. This protein binds to and colocalizes with the breast cancer 2 early onset protein (BRCA2) in nuclear foci and likely permits the stable intranuclear localization and accumulation of BRCA2.

Immunogen information

Gene ID:

79728

Uniprot

Q86YC2

Synonyms:

PALB2; FANCN; PNCA3

Antibody Information

Recommended dilutions:

WB 1:500 - 1:2000

Source:

Rabbit

Isotype:

IgG

Purification:

Affinity purification

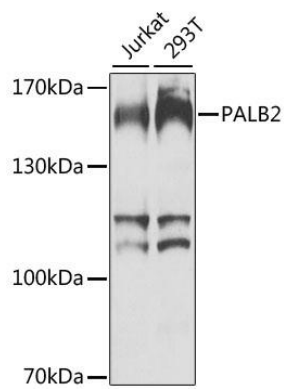
Immunogen:

Recombinant fusion protein containing a sequence corresponding to amino acids 99-198 of human PALB2 (NP_078951.2).

Storage:

Store at -20°C. Avoid freeze / thaw cycles. Buffer: PBS with 0.02% sodium azide, 50% glycerol, pH7.3.

Product Images



Western blot analysis of extracts of various cell lines, using PALB2 antibody (CAB8373) at 1:1000 dilution. Secondary antibody: HRP Goat Anti-Rabbit IgG (H+L) (CABS014) at 1:10000 dilution. Lysates/proteins: 25ug per lane. Blocking buffer: 3% nonfat dry milk in TBST. Detection: ECL Basic Kit (CABM00020). Exposure time: 60s.